

The background of the entire page is a teal color. It features four close-up portraits of children's faces, arranged in a 2x2 grid. The top-left child is a young Black girl with braided hair, looking directly at the camera with a neutral expression. The top-right child is a young white girl with light hair, smiling slightly. The bottom-left child is a young boy with glasses, looking slightly to the left. The bottom-right child is a young boy with dark hair, smiling broadly. The text 'REINVENT' is in a bold, white, sans-serif font, and 'aces' is in a white, lowercase, rounded sans-serif font.

REINVENT aces

**2019-2020
ANNUAL REPORT**

www.aces.org

REINVENT
aces

2019-2020
ANNUAL REPORT

aces

350 STATE STREET • NORTH HAVEN, CT 06473

(203) 498-6800 / www.aces.org

Executive Director’s Message	1
Mission / Vision / Organizational Beliefs	2
About ACES	3
ACES Member Districts	5
ACES Governing Board	6
ACES At-A-Glance	7
Reinvent ACES	9
ACES Beginning Teacher Recognition Award	17
ACES 2019 Convocation	18
ACES Schools	19
ACES Schools: Interdistrict Magnet Schools	20
ACES Schools: Special Education Schools	21
ACES School Improvement Services	23
ACES Regional Educational Programming	26
ACES Central Administration	27
ACES 2019-2020 Teacher of the Year and Executive Director Recognition Award Recipients	29
The Connecticut RESC Alliance	30
2019-2020 Service Recipient Chart	31
Major Interagency Relationships and Sources of Funding	32
2019-2020 Expenditures	33
2020-2021 Budget	35
ACES Organizational Chart 2020-2021	37
ACES Directory 2020-20201	39

Area Cooperative Educational Services does not discriminate on the basis of race, color, age, ethnicity, national origin, religion, gender, marital status, disability or sexual orientation.

Copyright © 2020 Area Cooperative Educational Services – This publication is protected by copyright and all rights are reserved. No parts of this document may be reproduced or transmitted in any form or by any means, electronic or mechanical, for any purpose, without the express permission of Area Cooperative Educational Services.

Dear Friends,

Reinventing comes about when times change and new needs emerge. This past year challenged us to rethink how we live, learn and work.

The times create a pivot point for us to reflect upon where we are, who we are, and what we want to become. Among the COVID-19 pandemic, social unrest, and unprecedented demands placed on everyone for just about everything, the time is ripe to stick with our core mission and vision in supporting people - parents, students, employees, school districts, Board members, and community members. In other words, it's a perfect time to reinvent. Our core values include putting social justice issues at the fore, not only to support those who need it the most, but also to be a beacon of light forging a path to a place where all of us want to be.



In late May, I wrote, “We were angered and saddened to watch as the pain and suffering of so many years unfolds after the horrible murder of George Floyd in Minnesota. At ACES, we will continue to hold fast to our values, mission, vision and work to right wrongs and fight against hate, racism, violence, and bigotry in all of their ugly forms. The safety and well-being of each other and our students will always be our agency’s work. We’re all looking forward to that time when the voices of the oppressed, whoever they may be, are heard, understood, valued, and appreciated. Let’s each of us do our part to make that happen.” That is what ACES stands for and what you can rely upon moving forward.

Over the past year, we have worked hard to overcome the devastating effects of COVID-19 on the educational arena. We supported our staff as they transitioned over a weekend to remote learning. We held employees in jobs through the spring. We forged a new plan to start the new school year facing a variety of unknowns with the pandemic. We developed an array of new programming, including an employee daycare center and summer reopening crews to prepare for the new school year. We continue to support our partner districts through enhanced services, such as the paraprofessional work program in Ansonia, expansion of the Regional Special Education Transportation initiative, and growth of our Early Head Start and Head Start programs through a freshly awarded federal grant, and opened our REGIONS program for incarcerated youth in two locations.

For fifty years, ACES has worked to advocate for and provide for the needs of those with less. We will continue to do so. During these ever-changing and ever-challenging times, ACES remains committed to its mission of enhancing and transforming lives through education, leadership and innovation. We invite you to join us in this pursuit. Together, we can create an equitable and socially just world one life at a time.

Sincerely,

A handwritten signature in black ink that reads "Thomas M. Danehy". The signature is written in a cursive, flowing style.

Thomas M. Danehy, Ed.D.

Executive Director



Mission

ACES is dedicated to enhancing and transforming lives through education, innovation, and leadership.

Vision

To create an equitable and socially just world one life at a time.

Organizational Beliefs

- Each individual has inherent worth
- All individuals can learn
- High expectations and effort are essential for higher achievement
- Quality education provides the foundation for the success of the individual and community
- Diversity strengthens an organization
- Individuals are responsible for their own actions
- Everyone has a responsibility to each other and to contribute to the common good
- Honesty and respect are essential for building trusting relationships
- A positive attitude enhances performance
- Collaboration enhances productivity and generates creativity
- Families are essential partners in education
- The willingness to change is necessary for individuals to grow and organizations to thrive

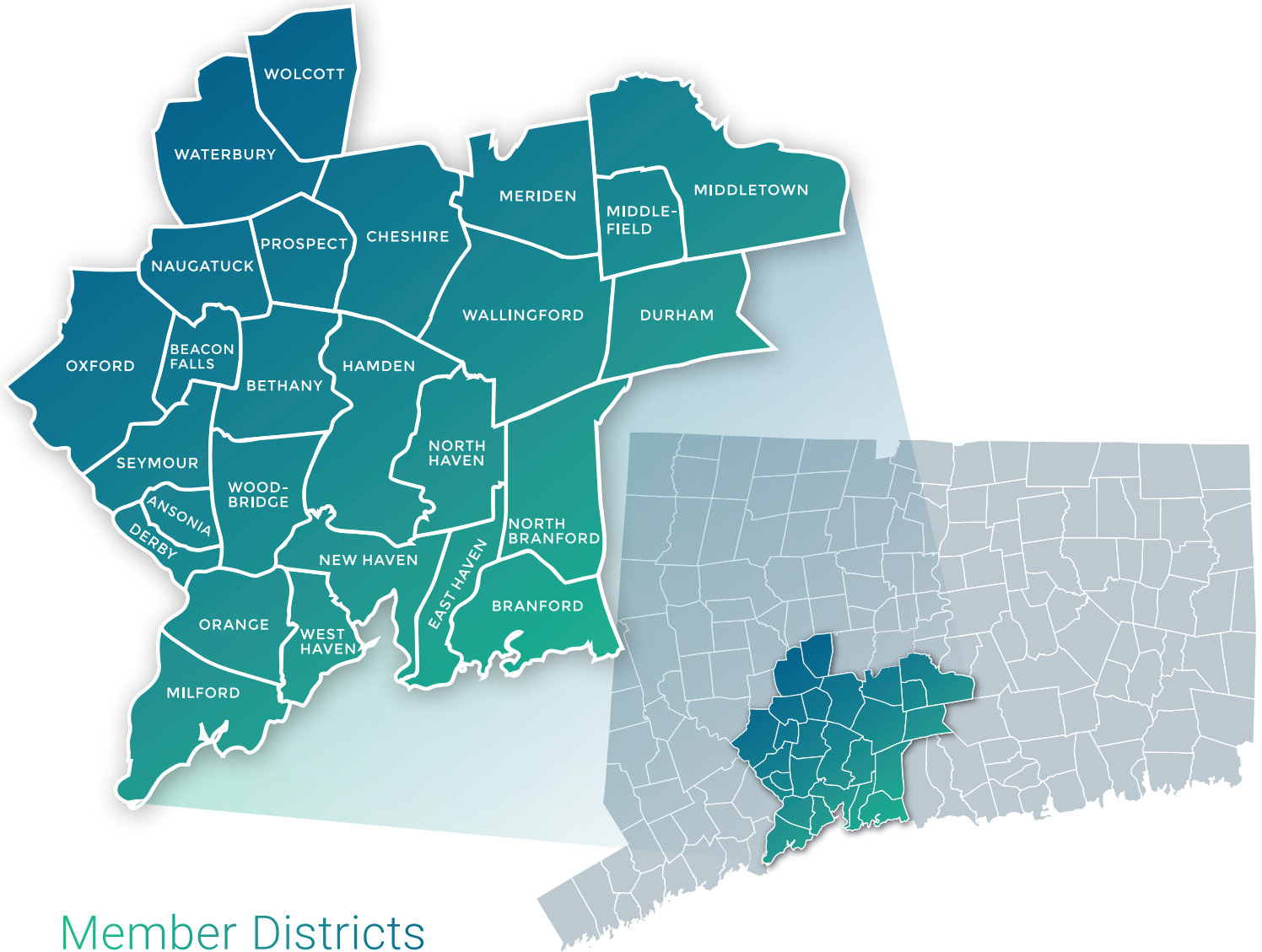


About ACES

Area Cooperative Educational Services (ACES) has been living its mission: to enhance and transform lives through education, innovation and leadership for fifty years. ACES is the regional educational service center for the twenty-five communities in New Haven and Middlesex Counties. ACES is both a non-profit service organization and a school district that serves over 2,000 students in three magnet and eight special education schools.

ACES' dedication to better serve its community and its commitment to equity and social justice is demonstrated by the wide array of services and programs offered. These services range from transportation, professional development and school improvement services, technology, translation, international, security, and occupational and physical therapy. ACES operates the Open and Magnet School Parent Choice programs for New Haven County, provides recruitment programs aimed at diversifying the educator workforce, has a federally funded Early Head Start Program and a vocational and life skills program for developmentally and physically disabled adults ages 21 and older.

To learn more about ACES, visit www.aces.org.



Member Districts

- Ansonia
- Bethany
- Branford
- Cheshire
- Derby
- East Haven
- Hamden
- Meriden
- Middletown
- Milford
- Naugatuck
- New Haven
- North Branford
- North Haven
- Orange
- Oxford
- Regional District #5 (Bethany, Orange, Woodbridge)
- Regional District #13 (Durham, Middlefield)
- Regional District #16 (Beacon Falls, Prospect)
- Seymour
- Wallingford
- Waterbury
- West Haven
- Wolcott
- Woodbridge

SCHOOL DISTRICT	MEMBER	OFFICE
Ansonia	Fran DiGiorgi	Executive Committee
Bethany	Edward Maher	
Branford	Ellen Michaels	
Cheshire	Vacant	
Derby	Laura Harris	Fiscal Committee
East Haven	Michele DeLucia	
Hamden	Lynn Campo	
Meriden	Rebecca Wronski	
Middletown	Vacant	
Milford	Cynthia Twiss	
Naugatuck	Ethel Grant	Vice Chairperson
New Haven	Vacant	
North Branford	Jana Balsamo	
North Haven	Dorothy Logan	Executive Committee
Orange	Susan Riccio	Fiscal Officer
Oxford	Shelley Lacey-Castelot	
Regional District #5	Robyn Berke	
Regional District #13	Norman Hicks	Chairperson
Regional District #16	Vacant	
Seymour	Vacant	
Wallingford	Michael Votto	
Waterbury	Elizabeth Brown	
West Haven	Patricia Libero	
Wolcott	Roberta Leonard	
Woodbridge	Vacant	

Executive Committee Members

OFFICE	MEMBER	SCHOOL DISTRICT
Chairperson	Norman Hicks	Regional District #13
Vice Chairperson	Ethel Grant	Naugatuck
Executive Committee	Fran DiGiorgi	Ansonia
Executive Committee	Dorothy Logan	North Haven
Fiscal Officer	Susan Riccio	Orange
Fiscal Committee	Laura Harris	Derby



975

Total Employees



\$96M

Total Budget



19

Buildings Owned & Operated by ACES

25

Communities in the ACES Region

80

Districts Served by ACES

11

ACES Schools

5

Collaborative Educational Programs

1,515

ACES Magnet School Students

623

ACES Special Education Students

2,138

Total ACES Students

ACES ACCESS / VOCATIONAL EDUCATION

89

Businesses Working With ACES Vocational Programs

205

ACES High School Students Participating In ACES Vocational Programs

135

ACES Access Individuals

BEHAVIOR SERVICES

24

Districts Served By ACES Behavior Services And Autism Programs

18

Homes Served By ACES Behavior Services And Autism Programs

EARLY HEAD START

85

Children Served In Early Head Start – Birth To 3.

15

Expectant Mothers Served In Early Head Start

6

Communities Participated In Early Head Start

EXTENSION THERAPY SERVICES

15

Districts/ Agencies Served By ACES Extension Therapy Services

115

Schools Served By ACES Occupational And Physical Therapists

1,479

Students Served By ACES Occupational And Physical Therapists

INTERNATIONAL

56

Partner Schools Around The World Have Now Joined The ACES International Education Network

80

International And Domestic Students Joined The First ACES International Online High School

26

Partner Districts In ACES-VHS Learning Consortium To Provide Online Learning.

1

New Branch Office For Asia And Australia In Beijing

OPEN CHOICE

13

Districts Participated

53

Schools Participated

439

Students Served

PROFESSIONAL DEVELOPMENT / ALTERNATIVE ROUTES TO CERTIFICATION

57

Districts and Agencies Participated in ACES ARC Programs

154

Educators Enrolled in ACES ARC Programs

1,061

Educators Participating in Professional Development Opportunities Facilitated by PDSI

REGIONAL SPECIAL EDUCATION TRANSPORTATION (RSET)

12

Districts Served by RSET

196

Special Education Students Transported

EDUCATIONAL TECHNOLOGY

9

Districts Served

49

Programs Supported

3,520

End-Users Supported

103

Workshops Offered

264

Data Privacy Contract Reviews and Applications Supported

2,420

Projects and Services Completed

250

Regional Technology Council Members Served

NETWORK SERVICES

4

Businesses and Districts Served

49

Programs Supported

3,520

End-Users Supported

5,257

Devices Maintained

2,605

Services Completed

TRANSPORTATION

1,066

ACES Students and Clients Transported

140

Vehicles in ACES Fleet

1 Million

Fleet Miles Driven by ACES Drivers



REINVENT aces

ACES Diversity

Recently, we have watched in horror as George Floyd, Breonna Taylor, Ahmaud Arberry and Rayshon Brooks, all unarmed American citizens, were murdered by police officers and armed vigilantes. These murders, along with the national health emergency and the subsequent protests that have demanded racial and economic equity and equality, remind us all that, as a society, we are still in the struggle and will remain in the struggle until all people are free to pursue the American ideals of “life, liberty and the pursuit of happiness” as set forth by the Declaration of Independence.

We are to be reminded that as educators, our number one job is to shape minds, motivate and inspire and prepare our students to be the next generation of teachers, doctors, lawyers, mechanics, entrepreneurs or whatever they choose to be in life. Now more than ever, ACES is committed to our vision “to create an equitable and socially just world, one life at a time.”

The peaceful protests that have engulfed our nation for the past few months remind us that Black Lives Matter. But we must be reminded that Black Lives Matter when it is time to promote and hire. We must be reminded that Black Lives Matter when we review our mission and vision statements that we are actually implementing anti-racists policies that have greatly contributed to the marginalization of people of color.

Our belief in the worth and dignity of each person forms the basis for our philosophy on human diversity. All persons, regardless of race, culture, ethnicity, gender, economic status, religious affiliation, sexual orientation, or handicapping condition deserves to be treated equitably and with respect for their humanity.

If we are going to be true to our mission of “enhancing and transforming lives through education, innovation, and leadership”, then we must recognize that it is our strong belief that the differences among us strengthen us, as a group, whether that group is a class, a school in the ACES organization, or our entire region. These differences strengthen us by giving us the opportunity to hear and view issues from different perspectives, and to utilize a variety of ways to solve problems.

Kevin Walton and Melissa Alers, ACES Diversity Committee Co-Chairs.

ACES PDSI Publishes:

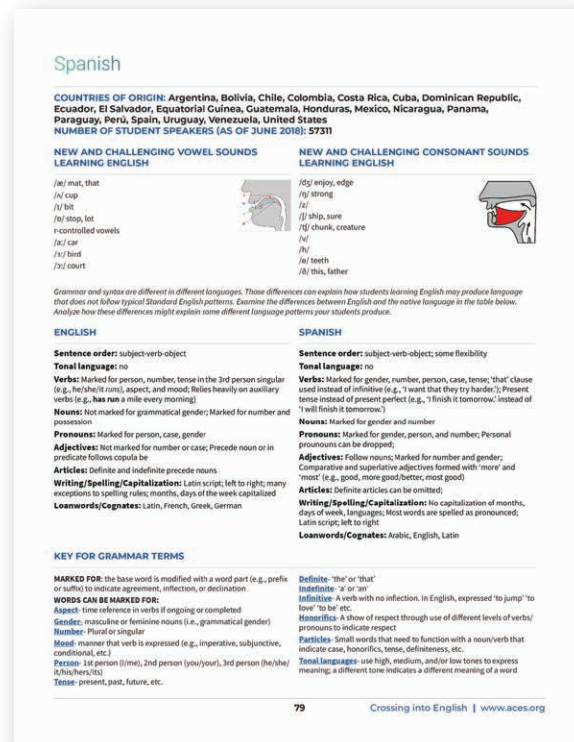
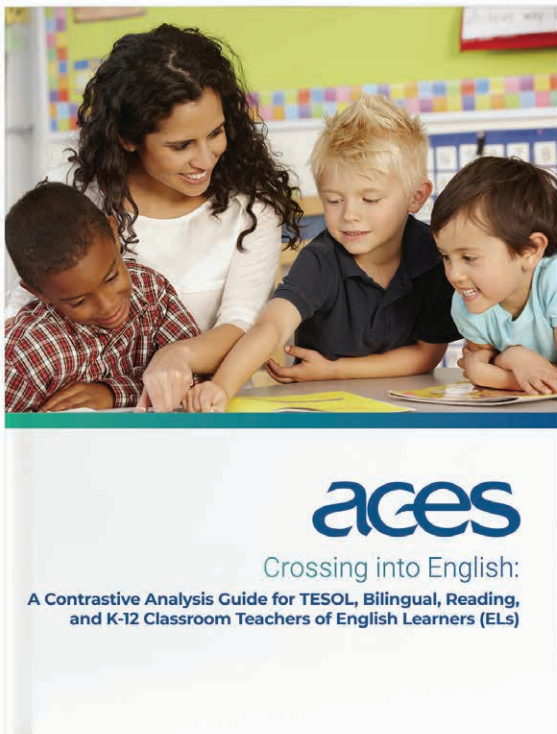
Crossing Into English: A Contrastive Analysis Guide for TESOL, Bilingual, Reading, and K-12 Classroom Teachers of English Learners (ELs)

Developed by Professional Learning Specialist Maggie Stevens, this guide, a contrastive analysis of over 90 languages and English, helps all teachers of English learners to identify the elements of the home languages that may transfer into the students' English and impact student performance.

Crossing Into English helps educators improve targeted instruction for ELs by providing information about:

- Neurolinguistic differences
- Acquisition of sounds in a second language
- Language transfer and common underlying proficiency
- How to assess English learners in reading
- Teaching foundational reading
- Building metalinguistic awareness
- Translanguaging and transfer errors

More than 200 copies have been sold to educators across 28 school districts in Connecticut!



ACES REGIONS

Re-Entry, Goal-Oriented Individualized Opportunities for Nurturing Success

The ACES REGIONS Hartford school-based program provides students with opportunities to increase their knowledge in core academic areas, all while learning skills to best navigate their communities as they are students who have been significantly involved in the juvenile justice system. The program collaborates with Connecticut Court Support Service Division, Yale Clinical Services, and Community Partners in Action to support adjudicated young boys ages 14-18 from all areas of Connecticut. The REGIONS teachers create educational opportunities for our students to gain knowledge in core academic areas (science, math, reading, writing and social studies) along with project-based learning, career readiness, life skills, culinary skills, physical education, health and wellness, Dialectical Behavioral Therapy and community-based projects.

ACES International Branch Opens in China

ACES International has recently opened their first branch office in the Haidian District of Beijing, situated within the Tsinghua University community. The ACES International team in the Beijing office consists of education specialists that work with international partner schools of ACES to further our program services in teacher training, administrative advisory, intercultural exchange, and online learning. This office becomes the central hub for that region of the world, also working throughout Asia and Australia.



In March 2020, ACES partnered developed an online high school diploma program through its international network for our domestic Connecticut school districts and international partners in China, Japan, Spain, Germany, and Australia. The first class of 70 international students begin September 2020 and complete their program in 2022.

ACES International announces its formal partnership and joint venture with the Helen Doron Education Group. This organization has over 1,000 premiere learning centers on three continents. ACES International has been selected to implement and

lead the first school in the United States with nursery and Kindergarten programming that prioritize language learning in Spanish, Mandarin and English. An education committee consisting of ACES staff will contribute their expertise as we work to establish the ACES-Helen Doron School by 2022. Inquiries about ACES International programs and services can be directed to acesinternational@aces.org.

Educational Center for the Arts Highlights



ACES Educational Center for the Arts student Koda Blue took first place in the regional August Wilson Monologue Competition.



ACES Educational Center for the Arts student, Ivan Lazaro, placed first in the 2020 English-Speaking Union National Shakespeare Competition in Greenwich Connecticut.



ACES Educational Center for the Arts students, Ana Paula Padilla Castellanos, Tirion Rodger and Jordan Hines received national recognition in the Scholastic Art and Writing awards for their Personal Essay and Memoir, Flash Fiction, and Poetry (respectively).

TEMS Named National Magnet School of Distinction by Magnet Schools of America

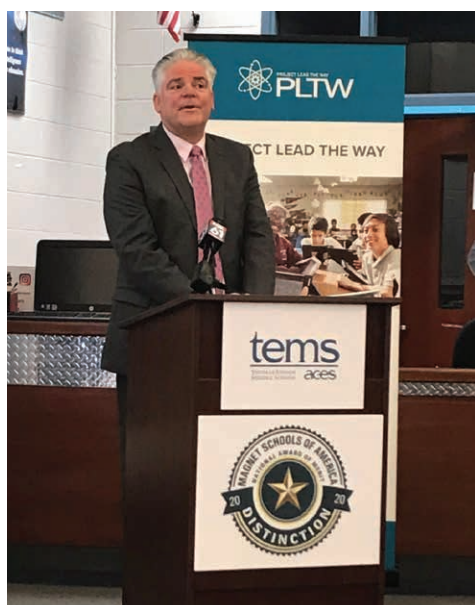


TEMS has been named a National Magnet School of Distinction by Magnet Schools of America, the national association for magnet and theme-based schools. ACES was one of twelve schools in Connecticut to receive the Distinction designation and one of two hundred and forty-four schools to receive it nationwide.

A Day of Distinction was celebrated at TEMS in February which is National Magnet School month.

At TEMS, every student, over three years, participates in five Project Lead The Way engineering courses, three challenging mathematics courses, and three NGSS-based science courses, all are supported through a one-to-one laptop program. All classrooms embed creativity, critical thinking, collaboration and communication in order to assure that the STEM theme is supported in all content areas.

To receive a national merit award, members of Magnet Schools of America must submit a detailed application that is scored by a panel of educators. These schools are judged and scored on their demonstrated ability to raise student academic achievement, promote racial and socioeconomic diversity, provide integrated curricula and instruction, and create strong family and community partnerships that enhance the school's magnet theme.



ACES Teacher's Grant Brings Music to Special Education Students



Music therapy makes a big difference for her students, which is why ACES teacher Jaime Plancon is excited to have some extra funds to purchase instruments thanks to a grant from California Casualty.

Plancon, a music therapist, works at ACES Village School—a school for pre-K through eighth grade students with cognitive, physical, behavioral, language, and medical challenges. She says that music is an important tool to facilitate functional learning for her students.

ECA Students Tour to China Yields Rich Experience

Enormous flakes of pollen were floating everywhere. A thick wall of smog obscured the Beijing skyline. The bus carrying East Haven High School students AvaRose Anastasio and Alexis Ferreira to their first destination was gridlocked in traffic.

AvaRose and Alexis, along with 13 other students on the trip, were the latest beneficiaries of a 2017 collaboration between New Haven's ACES Educational Center for the Arts, where the two study music, and the Chinese Ministry of Education.

It's the first partnership between an American public school and the Chinese Ministry of Education, according to ACES International Director Jason Hiruo.



ACES SHINES

After a hiatus of more than five years, commuters are able to get their shoes shined at New Haven’s busy Union Station. ACES SHINES, an entity of ACES ACCESS, debuted on Thursday, September 19, 2019 with a ceremonial ribbon-cutting ceremony in the lower level of New Haven’s Union Station. The new, small business opening means commuters will have an opportunity to get their shoes shined while waiting on their trains. The last official shoe shine services was Brito’s Shoe Shine Stand that ceased operations at the station in 2014.



ACES Employment Specialist Maureen Cavallaro with the ACES Shines crew and Jimmy Wolf, Teacher Assistant at Whitney Academy

Warm Hands, Warm Heart Recognition



L to R: ACES Governing Board Chair Norman Hicks, Warm Hands, Warm Hearts Organizer and ACCESS Job Coach Rachael Rubino, ACES Executive Director Dr. Thomas Danehy, and ACES Chief of Outreach & ACCESS, Dr. Evelyn Rossetti-Ryan.

ACES ACCESS collected socks, hats and gloves for those in need during the winter months. All donations were given to the Columbus House and the New Haven Green during the first week of December. Rachael Rubino was honored at an ACES Governing Board meeting for organizing the drive.

BAC Employee Recognition Dinner

ACES Business Advisory Council celebrated its 20th Annual Employer Recognition Dinner on October 16, 2019 at Anthony’s Ocean View restaurant in New Haven. Established in 1997, the ACES Business Advisory Council works with ACES staff to provide employment and vocational training opportunities for students and clients in the ACES ACCESS program, ACES Whitney High Academy, and ACES Whitney High School North. The ACES Business Advisory Council is a diverse group of business professionals and ACES staff from the greater New Haven region, who work together to enhance employment opportunities for ACES students and adult special needs populations.



Leeder Hill

ACES at Leeder Hill held its ribbon cutting ceremony on September 18, 2019, featuring local dignitaries and state educational officials. The new campus, located at 130 Leeder Hill Drive in Hamden, consolidated two special education programs into one location - ACES Whitney Academy EXPLORE & CREATE and ACES Whitney High School North. ACES broke ground on the 130 Leeder Hill location back on December 7, 2017. The new facility has 140,000 square feet under one roof and accommodates 300 students. The building was specifically designed to meet the needs of the students and allows ACES to enhance the educational opportunities for special needs high school students.



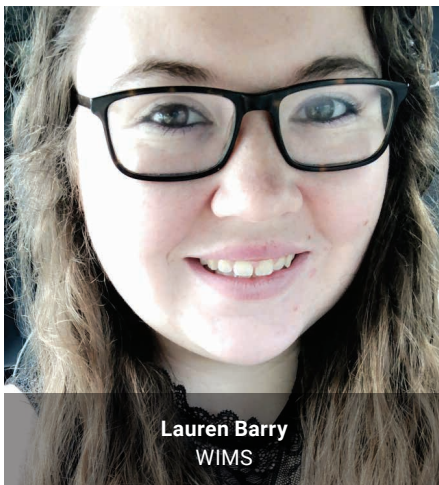
ACES Beginning Teacher Recognition Award

In 2019-2020, ACES created the Beginning Teacher Recognition program, which recognizes and honors first and second-year teachers at ACES and supports the retention of excellent teachers in both the profession and in ACES schools. The Beginning Teacher Recognition program does not recognize the "best" new teacher; instead, it strives to acknowledge new teachers who have persevered through their first or second year in the teaching profession.

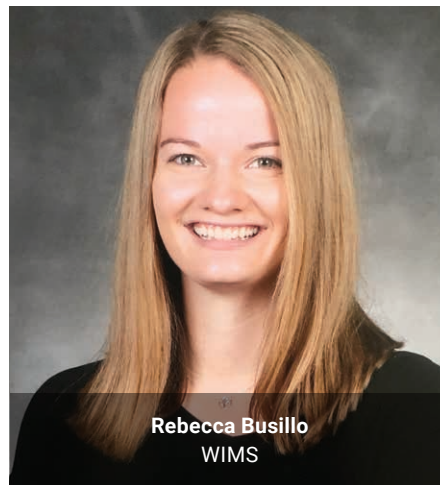
These teachers:

- seek out and demonstrate growth as a teacher and a professional
- take the initiative to lead when asked
- are team players who bring new ideas to the team
- are there for their students, families, colleagues, and the school.

Congratulations to the following beginning teachers for being selected as the first recipients of the ACES Beginning Teacher Recognition Award:



Lauren Barry
WIMS



Rebecca Busillo
WIMS



Christina Ceccorulli
Whitney Academy



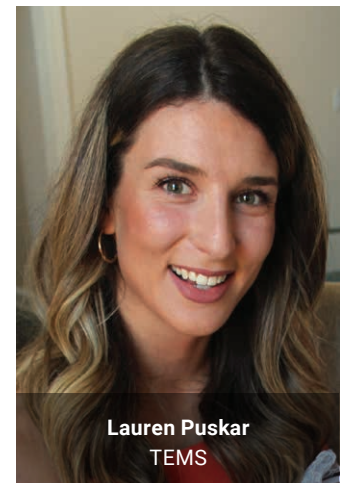
Carin Lopez
WIMS



Shane McGee
Whitney High School North



Tyron Mott
ACES at Mead School



Lauren Puskar
TEMS

2019 Convocation



The 2019 Convocation was dedicated to celebrating 50 years of ACES. It featured a panel discussion moderated by Sharyn Esdaile, former WIMS Principal, and featured current ACES Executive Director Dr. Thomas M. Danehy

and previous ACES Executive Directors Dr. Craig W. Edmondson, Dr. Cheryl S. Saloom, and Peter C.

Young. Staff questions drove the discussion. The event also featured staff recognition and a wellness fair.





WIMS



ECA

ACES Schools

As a local education agency (LEA), ACES operates a number of schools and educational programs that serve the needs of member school districts across the region. The two primary district needs that we address in our schools are a) issues of academic achievement stemming from racial, ethnic and economic isolation; and b) educating students whose disabilities pose challenges that exceed the capacity of local districts. In response, we provide rigorous academic curricula through three interdistrict magnet schools that enroll close to 1,600 students, and eight special education schools that enroll over 600 students.



TEMS

ACES Interdistrict Magnet Schools

ACES Educational Center for the Arts (ECA)

Located in the heart of New Haven's Audubon Arts District, ACES Educational Center for the Arts (ECA) is a public, half-time, magnet high school for the 25 school districts in south-central Connecticut and beyond. Through intensive study of music, dance, theater, writing and visual arts, ECA students learn side by side with peers and practicing artists as they discover their creative potential. At ECA, we play, perform, question, and collaborate as we explore ourselves and our world. This year's graduates will attend universities and conservatories including Berklee School of Music, The American Musical and Dramatic Academy, University of Chicago, Howard University, The New School, UNH, UCONN, Quinnipiac, Savannah College of Art and Design, New York University and Yale. ECA alumni live and work all over the world, as creative directors, theater directors, graphic designers, journalists, and more. Experience the transformative power of the arts at ECA.

ACES Thomas Edison Middle School (TEMS)

is an Interdistrict magnet school where 6th through 8th-grade students focus on science, technology, engineering, and mathematics. Thomas Edison Middle School's mission is to empower students to use technology effectively in order to become knowledgeable, capable, and ethical digital citizens. TEMS was recognized as a 2019-2020 Project Lead the Way School of Distinction. They have been recognized three years in a row and are proud to be one of 176 schools in the nation for this award. TEMS earned Magnet



Schools of America's National Magnet School Merit Award of Distinction for 2020. TEMS teachers, Jason Betz and Dr. Christine Parisi, were awarded a Fund for Teachers Grant to strengthen existing school collaborations with several schools in Sierra Leone, to enhance projects, improve distance learning frameworks and create hi-low reading passages linked with primary sources. They will travel in the summer of 2021 due to the COVID-19 pandemic.

ACES Wintergreen Interdistrict Magnet School (WIMS)

is a K-8 Magnet school serving close to 630 students from more than a dozen Connecticut school districts. ACES Wintergreen Interdistrict Magnet School is dedicated to providing all students with a safe and nurturing environment that immerses each student in the arts, grounds them in restorative behaviors and engages their minds to ensure academic and personal success. Wintergreen's rigorous curriculum is designed and implemented to prepare students to leave our school with the inspiration to create, collaborate, communicate, and discover their passion through innovation and the arts.



ACES Special Education Schools

ACES Center for Autism Spectrum & Developmental Disorders (CASDD)

is an educational and clinical program serving students ages 11 – 21 with autism spectrum and developmental disorders. CASDD uses the Science-based Approaches to Independence and Life Skills (SAILS) program. Developed at ACES, the SAILS program is based in the science of applied behavior analysis. Staff facilitate student independence through the instruction of academic, community, executive, social, communication, and life skills.

ACES at Mead Elementary School (AMES)

In 2018, Ansonia Public Schools partnered with Area Cooperative Educational Services (ACES) to establish an exciting new program at Mead Elementary School, to focus on specific student needs including the areas of academic, behavioral, and therapeutic interventions. AMES offers a strong focus on academics with a full range of art, physical education and other activities with Mead School students. AMES is open to all Ansonia and surrounding area students.

ACES Mill Academy

is a public school that provides high-quality educational programming for children in grades 6 through 8 who have significant social, emotional and behavioral issues. Recognizing that many of our students are academically behind in grade level, ACES Mill Academy offers differentiated instruction in small classroom settings. Each classroom has a teacher and teacher assistant that allows us to keep the student to teacher ratio low. Therapeutic and behavioral supports are a critical design element of this program. The school also has specialized programming for students on the autism spectrum, as well as for those with significant trauma and/or psychiatric needs.

ACES Mill Elementary School

is a new and innovative program that serves students in kindergarten through 5th grade who have needs beyond the current in-district educational programming. ACES Mill Elementary combines the best of what ACES experts know is successful in managing and modifying challenging behavior that enables students to function effectively in a classroom environment and innovative trauma-informed therapeutic programming.

ACES REGIONS Hartford Educational Program

is a collaboration with the Connecticut Court Support Service Division, Yale Clinical Services and Community Partners in Action to support adjudicated young boys ages 14 through 18 years old. Students will receive academic, community integration, and social emotional learning courses, along with wrap around clinical and reintegration services, to ensure successful transitions back to their communities as well as decreasing the recidivism rate of court level infractions. The teachers create educational opportunities for our students to gain knowledge in core academic areas (science, math, reading, writing and social studies) along with project-based learning, career readiness, life skills, culinary skills, physical education, health and wellness, Dialectical Behavioral Therapy and community-based projects. This is accomplished by using specific goal-based programs such as: ALEKS, Achieve3000, Servsafe and Dialectical Behavioral Therapy curriculum. The program has two locations in Hartford and Hamden.

ACES Whitney Academy

formerly known as ACES Whitney High School East/West & CREATE serves a diverse student population between the ages of 14 - 21. The educational program provides all of the necessary supports to enhance students' abilities to develop in the areas of academics, vocation/employment, life skills, communication and social skills. The transitional component for students 18 - 21 years of age supports students in developing self-advocacy skills as well as work and life skills that will assist students in their ability to be successful, independent working adults.

ACES Whitney High School North

provides a positive, therapeutic, individualized and multifaceted program for high school students with significant behavioral, mental health and learning issues. Students participate in a full academic and vocational program that includes a motivational, behavioral management system. Instructional methods include frequent assessment of student progress and the expanded opportunity for students to receive remediation. In addition to academics and behavioral support, Whitney High School North features a Literature to Life program, trips to Washington, D.C., Boston and New York, as well as the opportunity to take courses at Gateway Community College.

ACES Village School

provides special education instruction to students from all over the state of Connecticut. It consists of three units: Integrated Pre-School Program, Early Intensive Behavior Intervention (EIBI), and Village programs. The Integrated Preschool provides opportunities for integration with typical peers for students ages 3-5 years old. Students who attend Village School all have significant cognitive delays in addition to their identified disability. ACES Village School provides extensive, comprehensive, and collaborative services to children ages 3-14 with a wide range of abilities and complex needs. Related services include speech, physical and occupational therapies, social services, behavioral services, adaptive physical education, music therapy, and nursing services.

ACES Services

ACES International facilitates comprehensive opportunities for teaching and experiential learning, real-world experience, and collaborative service projects. This is accomplished through partnerships, online learning, research, creative activities and community engagement. In the 2019-2020 academic year, ACES experienced significant growth in its development with new and exciting opportunities in China, Spain, and Australia. The total number of student participants in intercultural exchange programming reached an all-time high of 200, that pulled from 30 Connecticut school districts (22 ACES Partner Districts), while the professional programs also exceeded previous years with 50 U.S. and international research participants. ACES has now expanded its global engagement and professional network to over 45 educational institutions around the world.

Behavior Services and Autism Programs (BSAP) provides direct and support services for schools, organizations, and families in south-central Connecticut. The services involve behavioral assessment, support plan management and implementation, intensive instructional programming, and staff training/development. Behavior Analysts, ABA Trainers, and Behavior Technicians join with other team members within schools at ACES and beyond to provide effective educational solutions and opportunities. Additionally, ACES BSAP provides regional professional development opportunities.

Early Childhood Services (ECS), part of ACES PDSI, offers a wide range of supports for public and community-based early care programs. In partnership with the Office of Early Childhood and the RESC Alliance, ECS supports the CT Accreditation Quality Improvement System (AQIS), a state resource system providing leadership and support for early childhood programs to achieve and maintain program accreditation by the National Association for the Education of Young Children (NAEYC). NAEYC study groups and overview sessions are held regularly, as well as professional learning on the CT ELDS, CT DOTS, and the Pyramid Model. ECS provides early care programs with customized professional learning and coaching on a variety of topics including curriculum development, social/emotional development, implementing and planning with the CT ELDS and CT DOTS, and content specific support for young learners (language/literacy, science, math, etc.)

Educational Technology specializes in the K-12 education sector, offering support for current and evolving educational technology initiatives. Deliverable services include: strategic digital learning plans, data services, data integration, software application support (e.g., PowerSchool, ParentSquare, ThoughtExchange), business intelligence dashboards, data privacy best practices, project management, ADA compliance, service desk management, and regional technology council networking opportunities.



ACES REGIONS



Early Head Start



Educational Technology

Extension Therapy Services provides contractual occupational therapy and physical therapy to member school districts, local private schools and agencies. Services are provided as a related service when deemed necessary for a special education student to participate in his and/or her educational curriculum and also to provide, as requested by the school district or school, support to the general education curriculum. In 2019-2020, ACES Extension Therapy Services provided services to 1479 students, 115 schools and 15 districts/agencies.

Facilities and Construction Services continues to support and maintain ACES facilities. ACES Facilities and Construction Services renewed numerous vendor contracts and issued purchase orders. The department constructed two seclusions rooms at Village and upgraded the Seclusions rooms at Mill Academy. In addition, installed phase 1 of the code required rescue windows at 88 Bassett Road, the new location of our Wintergreen program. Relocated Network Services to 205 Skiff Street. Continued to manage the close out of Leeder Hill. Issued RFQ/P and awarded Design Services for the renovation of Wintergreen at 88 Bassett Road .

In addition, they prepared ACES facilities for COVID-19. This included cleaning and disinfecting, installing and setting up social distancing protocols and HVAC modifications. We instituted an inventory system and storage facility to store and distribute to our students and staff Personal Protective Equipment (PPE).

Health Insurance Collaborative is a coalition for health insurance among ACES member districts and communities. The combined buying power of ACES towns, school boards and non-profit agencies helps to provide high-quality health insurance at competitive rates. Insurance Collaborative participants include the Town of North Haven, the North Haven Board of Education, the Ansonia Board of Education, and the East Haven Board of Education.

Marketing Services provides public, media and community relations, branding and marketing services to member districts. Services are provided to ACES schools and programs and through contracted services with our member districts.

Network Services delivers cost effective solutions to meet the technology needs of school districts throughout the ACES region. Deliverable services include: end-users' computing, hardware purchasing and support, network health, preventative measures, disaster recovery, virtual environments, and cyber security.

Professional Development and School Improvement (PDSI) is the professional learning division of ACES. PDSI is a driven team of individuals that designs customized programs to support regional districts' with their professional learning needs. With a long track record of success with loyal internal and external clients, PDSI provides cost-effective, customized solution pathways to meet the needs of ACES collaborative partners by addressing professional learning at every phase. The PDSI team offers unique and targeted services and learning designs to support educators in a myriad of content areas to learners of all ages and abilities in addition to offering seminars in specific subject areas, coaching, instructional practices, and technology skills. In addition to providing coaching, consultation, and technical assistance, PDSI facilitates regional education programs, and two alternate route to certification (ARC) programs, the Alternate Route to Certification for Library Media Specialists (ARCLMS) and Alternate Route to Certification for Teachers of English Learners (ARCTEL).

Regional Special Education Transportation (RSET) provides cost-saving, safe, quality transportation for special education students traveling to non-ACES placement sites. The ACES RSET initiative was launched in September 2018. In 2019-2020, ACES RSET worked with 12 districts and transported 196 students.

Security Services works to enhance emergency response and planning for ACES schools and programs. In 2019 - 2020, the new Security division implemented training for 500 administrators and staff that focused on standardizing agency-wide practices, terminology, situational awareness, and procedural response. ALICE (Alert Lockdown Inform Counter Evacuate) training for all ACES employees will play a major role in further development of the agency's commitment to safeguard its students and staff. In its role as a service provider, ACES Security will assist school districts with planning and prevention, communications, command structures, and assessment.

Translation Services provides interpreters and written translations in a wide variety of languages including American Sign Language (ASL).

Transportation Services provides specialized door to door transportation for students and adults to and from ACES schools and programs as a contractual service to ACES sending districts and state agencies. In 2019-2020, ACES Transportation Services transported 1,066 special education students and 110 adult consumers utilizing a fleet of 140 vehicles. The fleet includes a wide variety of vehicles that cater to the special needs of our student and client population to ensure safe and efficient transportation at all levels.

ACES Regional Educational Programming

ACES Early Head Start and Head Start is a federally funded community-based program that serves eligible families birth to five, as well as expectant families in Middlesex County. The Early Head Start program option provides high-quality child development and parent support services in the home with an emphasis on the role of the parent as the child's first and most important relationship. The Head Start program option will continue to provide comprehensive early childhood education and support school readiness skills for 3 and 4 year olds in a center-based setting.

ACES Adult Career & Community Empowerment Support Services (ACCESS) provides vocational training, job placement and support for adults with disabilities in the Greater New Haven area. The program focuses on three areas: Individualized Supportive Employment assists individuals in securing and sustaining competitive employment in the community. Group supported employment assists individuals working in a group setting with company employees. Day support program – provides recreational and community-based opportunities. ACCESS programming includes job readiness, specialized job training such as ServSafe certification, and four businesses: Designs by ACCESS décor and centerpieces, ACES Shines shoeshine, United Lawn Care and ACCESS commercial cleaning services. ACES Shines shoeshine business launched in September 2019 at New Haven's Union Station in partnership with the New Haven Parking Authority.

ACES Open Choice program started in 1998. It provides options for families to choose available openings in urban (New Haven) and suburban schools in the ACES region. In 2019-2020, 439 students, 53 schools and 13 school districts participated in ACES Open Choice Program.

ACES Magnet School Parent Choice is coordinated by ACES for districts in the ACES region. Families in any non-partner school district can apply to a lottery for open seats in ACES WIMS or TEMS. Families provide student transportation, with a travel subsidy provided by ACES.

ACES West Haven Collaborative is an in-district collaborative program at West Haven High School which provides educational services to twenty students identified with intellectual and other disabilities. This multifaceted educational program provides students with the necessary supports in order to develop and enhance their academic, vocational, life and social skills and abilities.

ACES Central Administration

ACES Central Administration is dedicated to providing the sound technology, administration, fiscal and related services necessary to carry out ACES mission and goals. Central Administration oversees the smooth and efficient operation of our agency.

Executive Director serves as the Chief Executive Officer of ACES, as a regional service agency and as the superintendent of ACES schools.

Deputy Executive Director for Services oversees ACES market service divisions including Behavior Services, Autism Programs, Extension Therapy Services, Health Insurance Collaborative, International, Education Technology, Network Services, Professional Development and School Improvement, Security, Translation, Transportation. Additionally, this division oversees the agency's budgeting process, data management, nutrition services, grants management, program development and Choice programs.

Assistant Executive Director for Schools and Curriculum oversees the development, delivery, and assessment of teaching and learning within ACES schools and educational programs including the ACES Early Head Start and Head Start program.

Human Resources manages recruitment and hiring, benefits administration, labor relations, adherence to bargaining contracts and policy, fingerprinting services and minority teacher recruiting for ACES school districts. The department also works to orient staff to the agency and is involved in creating professional growth opportunities for all employees.

Center of Strategic Innovation develops new lines of revenue to respond to the needs of its own schools and programs and those of its member districts, secures resources to pilot, expands and sustains quality educational programs.

The Outreach & ACCESS platform was established in 2019 to support ACES work in the community and to assist with securing employment, and community sites for ACES ACCESS individuals and ACES students. The ACES Outreach & ACCESS platform coordinates the ACES Business Advisory Council, a partnership between business, civic and community leaders and ACES staff. Additionally, the Outreach & ACCESS platform represents ACES on local chambers of commerce and community organizations. Highlights from the past year's Outreach initiatives include the Warm Hands, Warm Heart - Hat, Sock, Glove Drive in November – December 2019 that benefitted the Columbus House in New Haven. Additionally, ACES ACCESS & Outreach ran a Food Drive in April that collected close to 400 food items and toiletries that benefitted families in need throughout New Haven County. In recognition of outreach efforts, ACES was presented with the Community Impact Award by the Quinnipiac Chamber of Commerce in 2019.

Marketing Services promotes ACES' mission and services by increasing the organization's visibility across the region and internationally through the production of all internal and external publications and campaigns.

Educational Technology specializes in the K-12 education sector, offering support for current and evolving educational technology initiatives. Deliverable services include: strategic digital learning plans, data services, data integration, software application support (e.g., PowerSchool, ParentSquare, ThoughtExchange), business intelligence dashboards, data privacy best practices, project management, ADA compliance, service desk management, and regional technology council networking opportunities.

Network Services delivers cost effective solutions to meet the technology needs of school districts throughout the ACES region. Deliverable services include: end-users' computing, hardware purchasing and support, network health, preventative measures, disaster recovery, virtual environments, and cyber security.

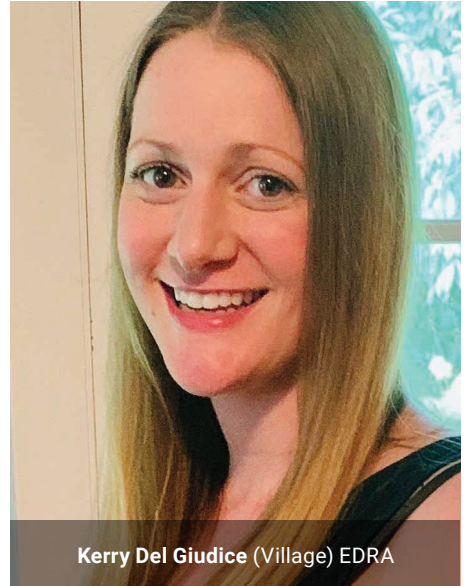
Facilities and Construction Services maintains the safety and security of ACES buildings and creates state-of-the-art learning facilities.

Fiscal Services manages all functions of Accounts Payable, Accounts Receivable, Payroll, Budgeting, and Auditing.

Pupil Personnel and Related Services provide ACES internal schools with specialized services such as social work, developmental guidance, psychology services, speech, physical and occupational therapies, nursing and psychiatric counseling services. In collaboration with the CSDE and SERC, and as part of a RESC Alliance initiative, ACES Pupil Personnel Services responds to identified trends in special education to provide resources, design and implement initiatives and determine effectiveness.

Assistive Technology Services offers AT Evaluations for individual students as well as classrooms to determine how to improve the functional capabilities of children with disabilities. Consultations and Continuation of Services provide ongoing training and updating of the student's AT supports to increase effective utilization of Assistive Technology. In-person Professional Development services are available and customized to meet district's needs in areas such as AAC Devices and Implementation, AT Tools for Reading, Writing and Math as well as AT Considerations/AT Law.

ACES 2019–2020 Teacher of the Year and Executive Director Recognition Award Recipients



RESC Alliance

CONNECTICUT ALLIANCE OF REGIONAL EDUCATIONAL SERVICE CENTERS



The Connecticut RESC Alliance

ACES is one of six regional educational service centers (RESCs) in Connecticut. All RESCs support Connecticut school districts' instructional and operational components. The RESC Alliance works collaboratively to develop and deliver high-quality, cost-effective educational resources, programs and services to the state's public schools. For additional information on the RESC Alliance, go to www.rescalliance.org.

Pathways to Success for English Learners is a series of professional learning opportunities funded through Title III statewide activities funds, coordinated by ACES, and facilitated by the RESC Alliance. This series is focused on enhancing academic outcomes for English learners (ELs) by increasing the capacity of school and district professionals to effectively meet the needs of ELs through research-based and effective practices and strategies and adherence to federal and state policies. In the 2019-20 school year, 192 educators attended sessions held at RESC locations across the state.

Recruitment Aimed at Diversifying the Educator Workforce:

As part of a statewide RESC partnership, ACES awarded grants to 9 schools districts in the ACES region. These grant-funded projects aimed at creating pathways to teaching, teacher recruitment, and retention of diverse educators. In addition, ACES PDSI and Human Resources departments collaborated to facilitate a regional professional development networking series to develop a plan for improving the recruitment and retention of racially, ethnically, and linguistically diverse educators, gain insight into some of the issues educators of color face and learn effective responses, and establish a membership within a cohort of educators of color.



	Ansonia	Bethany	Branford	Cheshire	Derby	East Haven	Hamden	Meriden	Middletown	Milford	Naugatuck	New Haven	North Branford	North Haven	Orange	Oxford	Seymour	Wallingford	Waterbury	West Haven	Wolcott	Woodbridge	Reg Dist #5	Reg Dist #13	Reg Dist #16	ACES Programs	Other
SPECIAL EDUCATION SCHOOLS																											
CASDD	x				x	x	x		x			x				x		x									11
Mill Academy	x		x	x	x	x	x	x	x	x	x	x	x	x			x	x	x	x							3
Mill Elementary	x		x		x	x	x	x		x		x	x					x		x						8	
Village School	x		x		x	x	x	x	x	x	x	x	x	x	x	x	x	x	x	x	x					13	
Whitney East/West	x			x	x	x	x	x	x	x	x	x	x	x		x	x	x	x	x			x			17	
Whitney North	x				x	x	x	x		x	x	x	x						x	x					x	24	
MAGNET SCHOOLS																											
ECA		x	x	x		x	x	x	x	x		x	x	x	x	x	x	x	x	x		x	x	x	x	x	55
TEMS								x	x			x		x				x	x					x		6	
WIMS	x				x	x	x	x			x	x	x	x				x	x	x						2	
SERVICES																											
ACCESS			x			x	x	x	x	x		x	x	x	x			x		x			x			2	
Behavior Services			x			x	x				x	x	x	x				x		x		x				x	4
Communications Services				x																			x			0	
Early Headstart									x																	5	
Extension Therapy	x	x	x		x	x		x			x	x			x		x			x		x	x			x	4
Health Insurance	x													x												0	
In-District Collaboratives	x											x								x						0	
International	x		x	x		x	x	x	x	x		x	x	x	x	x	x	x	x	x	x	x	x	x	x	x	63
Magnet School Parent Choice	x		x		x	x		x	x		x		x	x	x				x	x					x	7	
Minority Teacher Recruitment							x	x	x		x	x		x					x	x		x				0	
Open Choice	x	x	x	x	x	x	x			x		x	x	x	x	x	x	x	x	x		x	x			5	
PDSI/Early Childhood Services	x	x	x	x	x	x	x	x	x	x	x	x	x	x	x	x	x	x	x	x	x	x	x	x	x	x	154
Pupil Related Services	x		x		x		x	x	x	x		x							x	x	x					9	
Assistive Technology	x	x	x		x	x	x				x	x	x	x	x		x		x	x	x	x	x	x	x	4	
Regional Special Ed Transportation	x		x	x	x	x				x		x	x	x					x		x					x	0
Security																										0	
Educational Technology & Tech Services			x			x	x		x							x			x				x			2	
Transportation	x		x		x	x	x			x		x		x				x		x						1	
Translation																								x		1	

Major Interagency Relationships and Sources of Funding

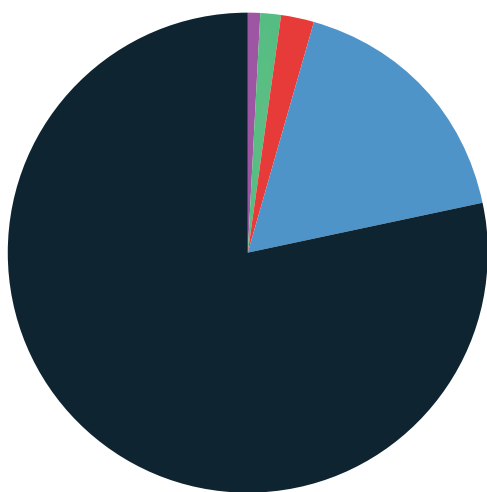
ACES maintains strong relationships with the school districts that created and govern the organization. This connection with member districts, plus other local funds, accounts for 78.48% of ACES financial support. Programs ranging from education for students with cognitive, emotional, and physical challenges to professional services including occupational and physical therapy and behavior services are financially supported by member districts through tuition and fees for services.

The second major source of support is the Connecticut State Department of Education (CSDE). ACES receives grants and contracts primarily for state initiatives, such as the magnet school initiative, the Open Choice program, professional development activities, school construction, and school readiness programs. These programs have an impact on both school districts and local communities. This support accounts for 17.23% of ACES income.

The third major ACES interagency relationship involves the Connecticut Department of Developmental Services (DDS). ACES principal involvement with this agency is through programs for disabled adults. This funding represents 2.14% of ACES budget. The fourth major source of support for ACES programs is federal funding through grants for educational programming. This source accounts for 1.39% of the total budget.

The final category of major revenue is from private sources in the form of grants from charitable foundations and other special contracts. These grants and “other” contracts represent approximately 0.77% of the ACES annual budget.

ACES is a member of the Connecticut Alliance of Regional Educational Service Centers and works closely with the other RESC’s on collaborative projects.



ACES Funding Sources

- Local Education Agencies **\$67,795,216** | 78.48%
- State Department of Education Grants **\$14,884,723** | 17.23%
- CT Department of Developmental Services **\$1,845,415** | 2.14%
- Federal Education Grants **\$1,197,903** | 1.39%
- Foundations/Private Donations/Other **\$661,413** | 0.77%

TOTAL: \$86,384,670

PROGRAM/DESCRIPTION	SOURCE	BUDGET	EXPENSE
INSTRUCTIONAL PROGRAMS			
SPECIAL EDUCATION			
1001 Whitney High School East & West	L	\$8,939,465	\$8,445,534
1003 Mill Academy	L	4,511,848	4,170,027
1004 Village School	L	6,823,262	6,804,338
1005 Village EIBI	L	4,796,188	4,090,242
1007 SAILS - Intensive	L	5,394,729	4,528,383
1011 Whitney High School North	L	5,796,913	5,373,144
1013 West Haven High Program	L	732,600	585,652
1017 Mill Road Elementary	L	4,328,020	4,562,198
1018 Regional Special Education Transportation	L	2,870,523	2,562,920
1019 ACES Meade Elementary	L	1,635,320	828,277
1040 Transportation	L	3,196,483	3,120,387
1060 Summer School	L	2,378,506	1,281,221
2270 Workers' Comp Trust Grant	O	12,900	12,052
		\$51,416,757	\$46,364,374
MAGNET SCHOOLS			
1203 Educational Center for the Arts	S,L,O	3,377,011	3,161,508
1205 Wintergreen Magnet School (WIMS)	S,L	8,696,000	8,287,546
1210 Thomas Edison Middle School	S,L	10,356,280	9,932,925
2205 Project Lead the Way - TEMS	O	7,495	4,770
2230 Title I Improving Programs 6/20	F	129,106	129,106
2238 Title I Improving Programs 6/21	F	399,110	183,185
2239 Title II A Teachers 6/20	F	76,533	45,731
2405 Magnet Transportation	L,S	899,600	968,208
2638 Title IV - Student Support & Enrichment	F	23,859	23,827
		\$23,964,994	\$22,736,806
REGULAR EDUCATION			
1204 NH Cooperative High School	L	375,038	340,478
1206 NH Betsy Ross Arts Magnet School	L	477,995	436,030
1209 New Haven (NH) ASPIRE	L	1,332,103	1,149,347
1218 Urban Youth	L	1,145,676	930,877
1219 New Haven Magnet Schools	L	-	44,552
1221 REGIONS (Hartford)	L	-	134,652
1227 New Haven FY19 to FY20 Carryover	L	58,499	1,400
2616 Perkins Grant - West Haven	F	123,216	6,159
		\$3,512,526	\$3,043,495
INTERDISTRICT PROGRAMS			
1671 Personalized Learning	L	14,638	2,614
		\$14,638	\$2,614
TOTAL INSTRUCTIONAL PROGRAMS		\$78,908,916	\$72,147,289
PUPIL PERSONNEL & SUPPORT SERVICES			
1101 Pupil Services	L	\$799,437	\$604,380
1102 Extension Therapy Services	L	3,872,771	3,598,599
1103 Behavioral Services	L	2,657,575	2,760,690
1105 Assistive Technology	L	478,120	287,820
1107 Translation	L	1,000	-
TOTAL PUPIL PERSONNEL & SUPPORT SERVICES		\$7,807,903	\$7,251,489
EARLY CHILDHOOD/EARLY HEAD START			
2810 Early Head Start 1/18-12/18	F	\$28,621	\$1,855
2811 Early Head Start 1/19-12/19	F	469,988	443,352
2812 Early Head Start 1/20-12/20	F	462,309	298,729
TOTAL EARLY CHILDHOOD/EARLY HEAD START		\$960,918	\$743,936

PROGRAM/DESCRIPTION	SOURCE	BUDGET	EXPENSE
PROFESSIONAL DEVELOPMENT PROGRAMS			
1602 Professional Dev/School Improvement	S, L, O	\$445,230	\$213,193
1604 Conference Management	L	83,000	71,931
1617 ACES International	O	500,077	392,804
1623 eARCLMS Online Library Media	L	215,675	189,714
1625 ARCTELL - Hartford	L	301,875	241,060
1626 ARCTELL - Norwich	L	8,306	8,306
1627 ARCTELL - New Haven	L	109,786	76,968
1629 ARCTELL - Hartford Coaches	L	87,896	61,117
1633 AQIS (United Way/Eastconn)	O	125,000	175,339
1641 New Haven Supp. SIG Funds	L	23,500	50,000
1644 New Haven TEAM Support	L	335,157	136,098
1652 PDSI Conference Services	S, L	135,000	114,590
1656 Virtual High School	L	28,100	28,025
1658 PDSI District Agent	L	14,000	13,996
2649 Title III A English Acq. 6/19	F	6,511	6,511
2651 Title III A English Acq. 6/20	F	70,963	59,448
2662 ARCTELL/Statewide ELL	S	90,000	90,000
TOTAL PROFESSIONAL DEVELOPMENT PROGRAMS		\$2,580,076	\$1,929,100
RESC ENTITLEMENTS			
2401 Administering Open Choice	S	\$175,214	\$82,097
2404 Choice Transportation	S	3,648,636	2,385,345
TOTAL RESC ENTITLEMENTS		\$3,823,850	\$2,467,442
CAREER SERVICES			
1504 ACCESS - Supported Employment	S, O	\$1,936,185	\$1,836,893
1550 Vocational Support Services	L, O	-	8,522
TOTAL CAREER SERVICES		\$1,936,185	\$1,845,415
GRAND TOTAL 2019-2020		\$96,017,847	\$ 86,384,671

Budgets Included in Above:

Central Office (1370,1401-1410, 1415)	\$10,166,734
Building Operations (1301-1321, 1350,1360)	\$6,346,120
Magnet School Operating Grants	\$11,526,133
Misc. Grants (Funding not guaranteed on an annual basis)	\$43,094

Legend of Funding Sources: **L:** Local **F:** Federal **S:** State **O:** Other

PROGRAM/DESCRIPTION	SOURCE	BUDGET
INSTRUCTIONAL PROGRAMS		
SPECIAL EDUCATION		
1001 Whitney Academy	L	\$9,596,221
1003 Mill Academy	L	4,519,284
1004 Village School	L	7,291,335
1005 Village EIBI	L	5,011,999
1007 SAILS - Intensive	L	5,873,025
1011 Whitney High School North	L	5,999,957
1013 West Haven High Program	L	734,294
1017 Mill Elementary	L	5,300,078
1019 Meade Elementary School	L	607,548
1018 Regional Special Education Transportation	L	3,016,588
1040 Transportation	L	3,604,776
1060 Summer School	L	2,400,000
2264 Workers' Comp Trust Grant	O	12,000
		\$53,967,105
MAGNET SCHOOLS		
1203 Educational Center for the Arts	S,L	\$3,545,185
1210 Thomas Edison Middle School	S,L	10,561,249
2230 Title I Improving Programs 6/21	F	204,858
2238 Title I Improving Programs 6/22	F	395,000 *
2637 Title II A Teachers 6/22	F	76,533 *
2239 Title II A Teachers 6/22	F	30,802
2638 Title IV Student Support Services 6/22	F	29,000 *
2601 Title IV Student Support Services 6/21	F	27,943
1205 Wintergreen Magnet School	S,L	7,340,356
		\$22,210,926
REGULAR EDUCATION		
1209 New Haven ASPIRE	L	\$1,290,787
1227 New Haven FY19 to FY20 Carryover	L	57,098
1219 New Haven Magnet Schools	L	400,000 *
1206 NH Betsy Ross Arts Magnet School	L	475,000 *
1204 NH Cooperative High School	L	375,000 *
1218 Urban Youth	L	1,091,753
		\$3,689,638
INTERDISTRICT PROGRAMS		
1671 Personalized Learning	L	\$10,000 *
		\$10,000
TOTAL INSTRUCTIONAL PROGRAMS		\$79,877,669
PUPIL PERSONNEL & SUPPORT SERVICES		
1105 Assistive Technology	L	\$469,713
1103 Behavioral Services	L	3,363,228
1102 Extension Therapy Services	L	3,872,771
1101 Pupil Services	L	789,738
1107 Translation Services	L	1,000
TOTAL PUPIL PERSONNEL & SUPPORT SERVICES		\$8,496,450
EARLY CHILDHOOD/EARLY HEAD START		
2810 Early Head Start 1/21-12/21	F	\$462,309 *
2812 Early Head Start 1/20-12/20	F	625,889 *
2817 Head Start	F	880,663
TOTAL EARLY CHILDHOOD/EARLY HEAD START		\$1,968,861

PROGRAM/DESCRIPTION	SOURCE	BUDGET
PROFESSIONAL DEVELOPMENT PROGRAMS		
1617 ACES International	O	\$430,258
1625 ARCTELL - Hartford	L	300,000 *
1629 ARCTELL - Hartford Coaches	L	87,000 *
1627 ARCTELL - New Haven	L	95,000 *
1626 ARCTELL - Norwich	L	8,200 *
1604 Conference Management	S, L, O	83,000
1623 eARCLMS Online Library Media	L, O	216,000 *
2633 EPFP - Title II Part A Teachers	L	23,900 *
1641 New Haven Supp. SIG Funds		50,000 *
1644 New Haven TEAM Support	L	140,000 *
1642 NHPS Transition Services	L	6,000
1652 PDSI Conference Services	S, L, O	75,000
1658 PDSI District Agent	L	18,000
2649 Title III A English Acq. 6/22	F	50,000 *
2651 Title III A English Acq. 6/21	F	11,515 *
1656 Virtual High School	L	29,000 *
TOTAL PROFESSIONAL DEVELOPMENT PROGRAMS		\$1,622,873

RESC ENTITLEMENTS		
2401 Administering Open Choice	S	\$175,214 *
2404 Choice Transportation	S	3,758,200 *
TOTAL RESC ENTITLEMENT		\$3,933,414

CAREER SERVICES		
1504 ACCESS - Supported Employment	S, O	\$2,851,074
1613 Student Career Services	L	219,839
TOTAL CAREER SERVICES		\$3,070,913

GRAND TOTAL 2020-2021 BUDGETS: \$98,970,180

Budgets Included in Above:

Central Office (1370,1401-1410, 1415, 1416)	\$8,134,792
Building Operations (1301-1321, 3100)	\$6,097,680
Magnet School Operating Grants	\$11,826,000 *
Misc. Grants (Funding not guaranteed on an annual basis)	*

* Estimated Budgets

Legend of Funding Sources: L: Local F: Federal S: State O: Other

GOVERNING BOARD

EXECUTIVE DIRECTOR

LEADERSHIP COUNCIL

SERVICES PLATFORM

Deputy Executive Director

Behavior Services

Center for Strategic Innovation

CHOICE

Data Management

Education Foundation

Education Technology and Network Services

Extension Therapy Services

Food Services

Grants Management

International Services

Marketing Services

Professional Development Services

Regional Special Education Transportation

Security Services

Translation Services

Transportation Services

SCHOOLS PLATFORM

Assistant Executive Director Schools

ACES at Mead School

Center for Autism Spectrum & Developmental Disorders

Early Head Start and Head Start Services

Educational Center for the Arts

Mill Academy

Mill Elementary

Pupil Personnel Services

REGIONS

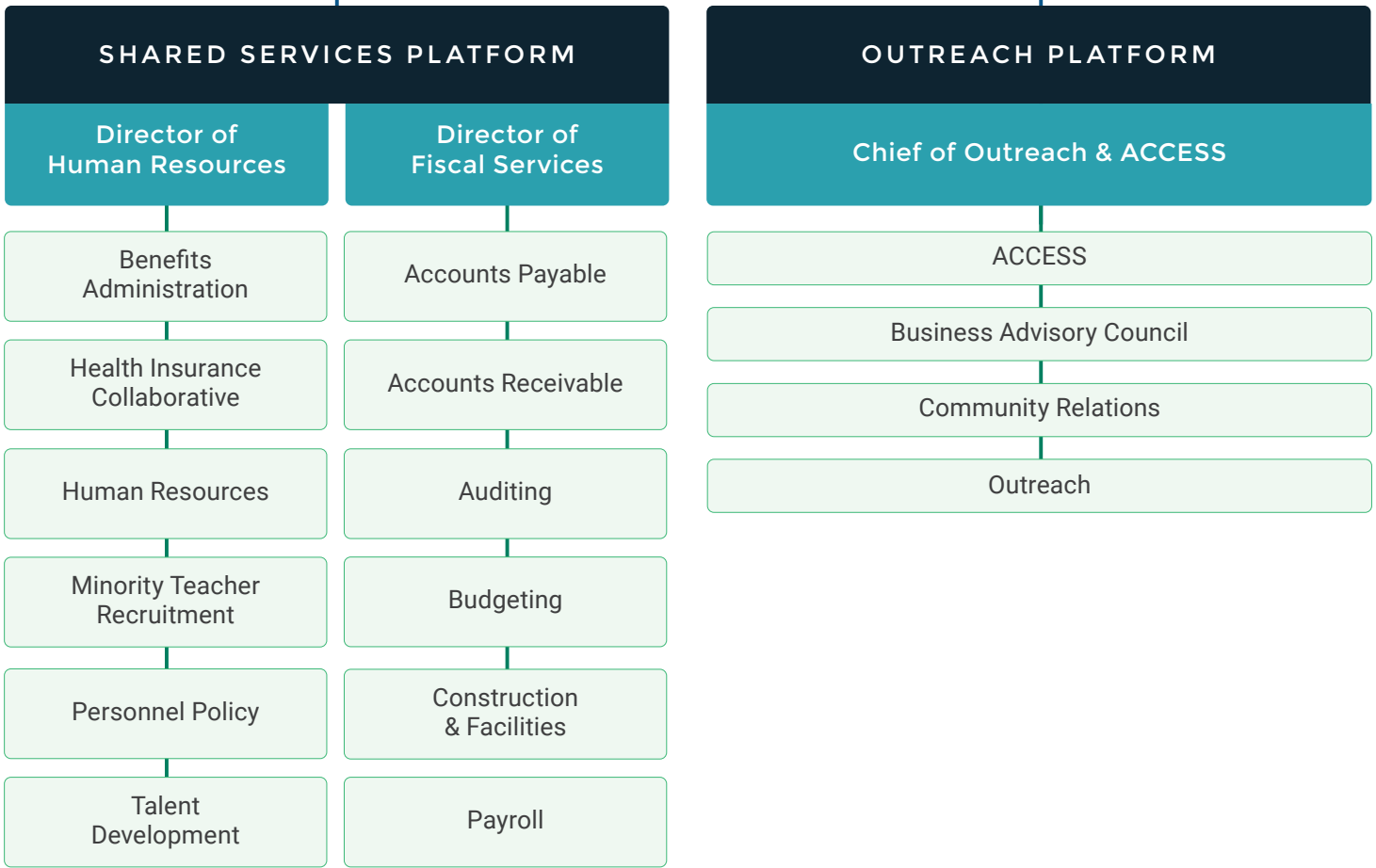
Thomas Edison Middle School

Whitney Academy/CREATE

Whitney North

Wintergreen Interdistrict Magnet School

Village/EIBI



Central Administration

Peter C. Young
Administration Building
 350 State Street
 North Haven, CT 06473
 (203) 498-6800
 Directions: (203) 498-6885

Executive Director
 Thomas M. Danehy, Ed.D.
 (203) 498-6817

Deputy Executive Director
 Timothy Howes
 (203) 498-6838

**Assistant Executive Director,
 Schools & Curriculum**
 William Rice
 (203) 498-6868

Director, Human Resources
 Steven Cook
 (203) 498-6823

Director of Fiscal Services
 Olga Simoes
 (203) 498-6812

Chief of Outreach and ACCESS
 Evelyn Rossetti-Ryan, Ed.D.
 (203) 234-1344

Schools

**ACES Center for Autism Spectrum and
 Developmental Disorders**
 26 Old Post Road
 Northford, CT 06472
 Leslie Peters, Principal
 (203) 484-9501

ACES Educational Center for the Arts
 55 Audubon Street
 New Haven, CT 06510
 Leslie Abbatiello, Principal
 (203) 777-5451

ACES at Mead Elementary School
 75 Ford Street
 Ansonia, CT 06401
 Heather Gish, Principal
 (203) 736-5090 ext 4229

ACES Mill Elementary School
 295 Mill Road
 North Haven, CT 06473
 Cynthia Ratchelous, Principal
 Kristin Harvey, Assistant Principal
 (203) 234-0303

ACES Mill Academy
 205 Skiff Street
 Hamden, CT 06517
 Kerri Gilmore, Principal
 (203) 281-6949

ACES REGIONS
 995 Sherman Avenue
 Hamden, CT 06514
 123 Washington Street
 Hartford, CT 06514
 Lisa Simone, Principal
 (203) 507-5545

ACES Thomas Edison Middle School
 1355 N. Broad Street
 Meriden, CT 06450
 Karen Habegger, Principal
 Megan Conatser and
 Vicki Rose, Assistant Principals
 (203) 639-8403

ACES Village School
 31 Temple Street
 North Haven, CT 06473
 Virginia Tagliatela, Principal
 Jennifer Santarcangelo, Assistant Principal
 (203) 234-7611

ACES Whitney Academy
 130-A Leeder Hill Drive
 Hamden, CT 06517
 Lisa Mucciacciaro, Principal
 Patricia Hart, Assistant Principal
 (203) 281-3577

ACES Whitney High School North
 130-B Leeder Hill Drive
 Hamden, CT 06517
 Bryan Markiewicz, Principal
 Kristin Harvey, Asst. Principal
 (203) 407-4500

ACES Wintergreen Interdistrict Magnet School
 88 Bassett Road
 North Haven, CT 06473
 Todd Solli, Principal
 (203) 281-9668

Services

ACCESS
 60 United Drive
 North Haven, CT 06473
 Evelyn Rossetti-Ryan, Ed.D.
 (203) 234-1344

Behavior Services and Autism Programs
 350 State Street
 North Haven, CT 06473
 James A. Hoko, Ph.D., BCBA-D
 (203) 498-6848

Educational Technology
 350 State Street
 North Haven, CT 06473
 Wanda Wagner, D.M.
 (203) 287-6840

Extension Therapy Services
 205 Skiff Street
 Hamden, CT 06517
 Laura Evangelist
 (203) 407-4470

Facilities & Construction Services
 350 State Street
 North Haven, CT 06473
 Timothy Gunn
 (203) 498-6839

Health Insurance Collaborative
 350 State Street
 North Haven, CT 06473
 Timothy Howes
 (203) 498-6838

International Programs and Services
 350 State Street
 North Haven, CT 06473
 Jason Hiruo
 (203) 498-6832

Early Head Start & Head Start Services
 300 Washington Street
 Middletown, CT 06457
 Rebecca Cuevas, LMSW
 (860) 704-0725

Marketing Services
 205 Skiff Street
 Hamden, CT 06517
 Elaine Sein
 (203) 498-6816

Network Services
 205 Skiff Street, Building 2
 Hamden, CT 06517
 Lon Harrigan
 (203) 287-6850

**Professional Development and School
 Improvement Services / Early Childhood
 Services**
 205 Skiff Street
 Hamden, CT 06517
 Emily Freal
 (203) 407-4408

Pupil Services and Collaborative Programs
 205 Skiff Street
 Hamden, CT 06517
 Eric Protulis
 (203) 498-6849

Regional Special Education Transportation
 350 State Street
 North Haven, CT 06473
 Timothy Howes
 (203) 498-6838

Translation Services
 350 State Street
 North Haven, CT 06473
 Melissa Alers
 (203) 498-6845

Transportation Services
 60 United Drive
 North Haven, CT 06473
 Rosemarie Arma-Nowlin
 (203) 234-2406

REINVENT aces



350 STATE STREET • NORTH HAVEN, CT 06473

(203) 498-6800 / www.aces.org

