

FIXTURES, FURNITURE, & EQUIPMENT/TECHNOLOGY PACKAGE – PHASE 2

**ACES BASSETT ROAD
88 BASSETT ROAD
NORTH HAVEN, CT 06473
STATE PROJECT #244-0043 SP
PUBLIC BID**

S/P+A PROJECT #22.075

DATE: May 16, 2025

The following changes to the Drawings and Project Specifications shall become a part of the Drawings and Project Specifications; superseding previously issued Drawings and Project Specifications to the extent modified by Addendum #1.

General Information:

- The deadline for RFIs is Friday, May 23, 2025.
- See attached RFI log. (2)

Changes to the Specifications:

- SECTION 120000, FURNITURE & MOVEABLE EQUIPMENT, Item Data Sheet A01, delete in its entirety. A new Item Data Sheet A01 has been added and is attached as part of this addendum. (1)

Changes to the Drawings:

- The following FFE drawings have been deleted in their entirety. New drawings (2) have been added and are attached as part of this addendum*:
 - FFE-1 OVERALL SECOND LEVEL FURNITURE PLAN *(Per Internal Review)*
 - FFE-2 OVERALL THIRD LEVEL FURNITURE PLAN *(Per Internal Review)*

The bid date remains unchanged by this addendum.

The addendum consists of four (4) pages of 8½" x 11" text and two (2) 30" x 42" drawings*.
End of Addendum #1



SILVER PETRUCELLI + ASSOCIATES
3190 Whitney Avenue | Hamden CT 06518
311 State Street | New London CT 06320

BID RFI LOG

Project: **ACES Bassett Road Alterations - FFE/Tech**
State Project/Bid #: **244-0043 SP**
S/P+A Project #: **22.075**

RFI Deadline: **05/23/25**
Bids Due: **05/30/25, 1p**

RFI #	QUESTION	DATE RECEIVED	RESPONSE	ADDENDUM # ISSUED
001	Will this be awarded as a whole to one vendor, to multiple vendors per category, or awarded by individual line items?	04/30/25	Bids will be evaluated from all angles. Preference is to have a vendor fulfill and entire category in lieu of splitting.	1
002	The way the Stagetek system is drawn out will not work. They suggest it being like this drawing attached. This is the drawing our engineering team came up with. It complies with ADA requirements on ramp size and landing turn radius. The side stage is 16in tall which requires a guardrail in front, we can lower it to 8in and remove the guardrail if needed.	05/09/25	Please proceed with the 8-ft-long ramp as shown in Drawing FFE-5. The proposed 16-ft-long ramp will not work in this space, there isn't enough room. The two (2) platforms adjacent to the ramp will both be at 8 inches high for the turn radius.	1

REV	DATE	DRN BY	REVISION DESCRIPTION
1	05/08/25	PJ	INITIAL RELEASE



- NOTES:
1. UNITS ARE "STAGETEK". UNIT SHALL BE MANUFACTURER'S STANDARD PANEL CONSTRUCTION, 3/4" (19 mm) OVERALL THICKNESS CONSISTING OF 1/2" (12.7 mm) THICK PLYWOOD SUBSTRATE WITH FINISH SURFACES CONSISTING OF A BLACK 0.030" (0.76 mm) THICK CRACKED ICE TEXTURED POLYPROPYLENE WITH BLACK SMOOTH HDPE BACKER SHEET, EDGED WITH EXTRUDED ALUMINUM.
 2. UNIT TO UNIT CONNECTION IS LEG TO LEG CONNECTOR
 3. TOTAL UNIT QUANTITY IS "11"
 4. CENTER ADJUSTABLE HEIGHT LEGS PROVIDED FOR RISER LEVELS (8", 16" & 24")
 5. FIXED HEIGHT LEGS PROVIDED FOR RISER LEVELS (8", 16" & 24")
 5. FRONT AND SIDE CLOSURE PANELS INCLUDED AS INDICATED.
 6. ONE - 16" RAMP INCLUDED AS SHOWN.
 7. CUSTOMER TO VERIFY PLATFORMS/RISER SYSTEM WILL FIT AND FUNCTION PROPERLY IN DESIRED SPACE.

THIS DRAWING AND RELATED SPECIFICATIONS ARE CONFIDENTIAL AND PROPRIETARY TO THE COMPANY. ANY REUSE OR REPRODUCTION WITHOUT WRITTEN PERMISSION FROM WENGER CORPORATION IS PROHIBITED. ALL RIGHTS ARE RESERVED.

Wintergreen Interdist Mag
Sch
NORTH HAVEN
CT, 06473

RFI #002 ATTACHMENT

FINISH:	WEIGHT:	ORDER:
---------	---------	--------

THIRD ANGLE PROJECTION
PER ASME Y14.3

DRAWING TITLE:
Stagetek Riser

PROJECT/OPPORTUNITY NUMBER:

20332958

SCALE: DO NOT SCALE DRAWING

DATE: 05/08/25

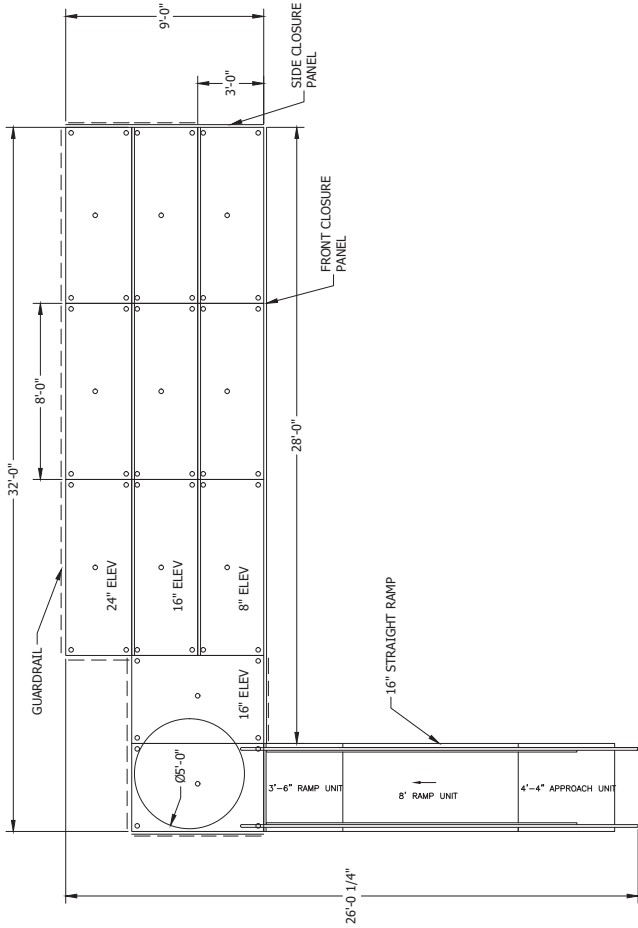
DRAWN BY: PJ

REV:

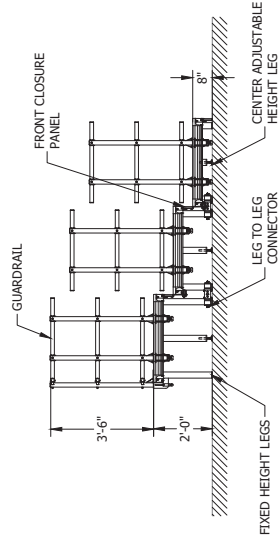
DRAWING NUMBER:

25P7537

SHEET 1 OF 1



STAGETEK - PLAN VIEW
SCALE: 3/8" = 1'-0"



STAGETEK - SECTION VIEW
SCALE: 1/2" = 1'-0"

CODE A01 **Total QTY:** 1
ITEM: Systems Furniture - U-shaped Double Workstation
MANUFACTURER: Teknion
MODEL: District - Modified Semi-Enclosed 08
FINISHES: High Pressure Laminate Finish: Pecan Reflect Metal Finish: Sand ; Panel Fabric: Luum Textiles: Emit/
Color: Watt
DIMENSIONS: 12'-3" x 8'-4"
DESCRIPTION: 2-Person Workstation; Slot mounted convertible panel wall 29x72; Wing worksurface
30x71x36x20; Rectangular worksurface 20x58; Slot mounted convertible panel wall 42x96; Add-
on glass screen 9 x 96; Clip mounted covertible wall panel 42 x 72; Rolling B/F pedestal 19"D;
Elevated drawer credenza 16x72 with 36"w B/F and 36" open compartment; Provide power
accessories (ceiling feed, power pole, harness, receptacle, flush plate, reinforcement channel) as
req'd; Provide all transitions, trim, in-fills and gables as req'd.

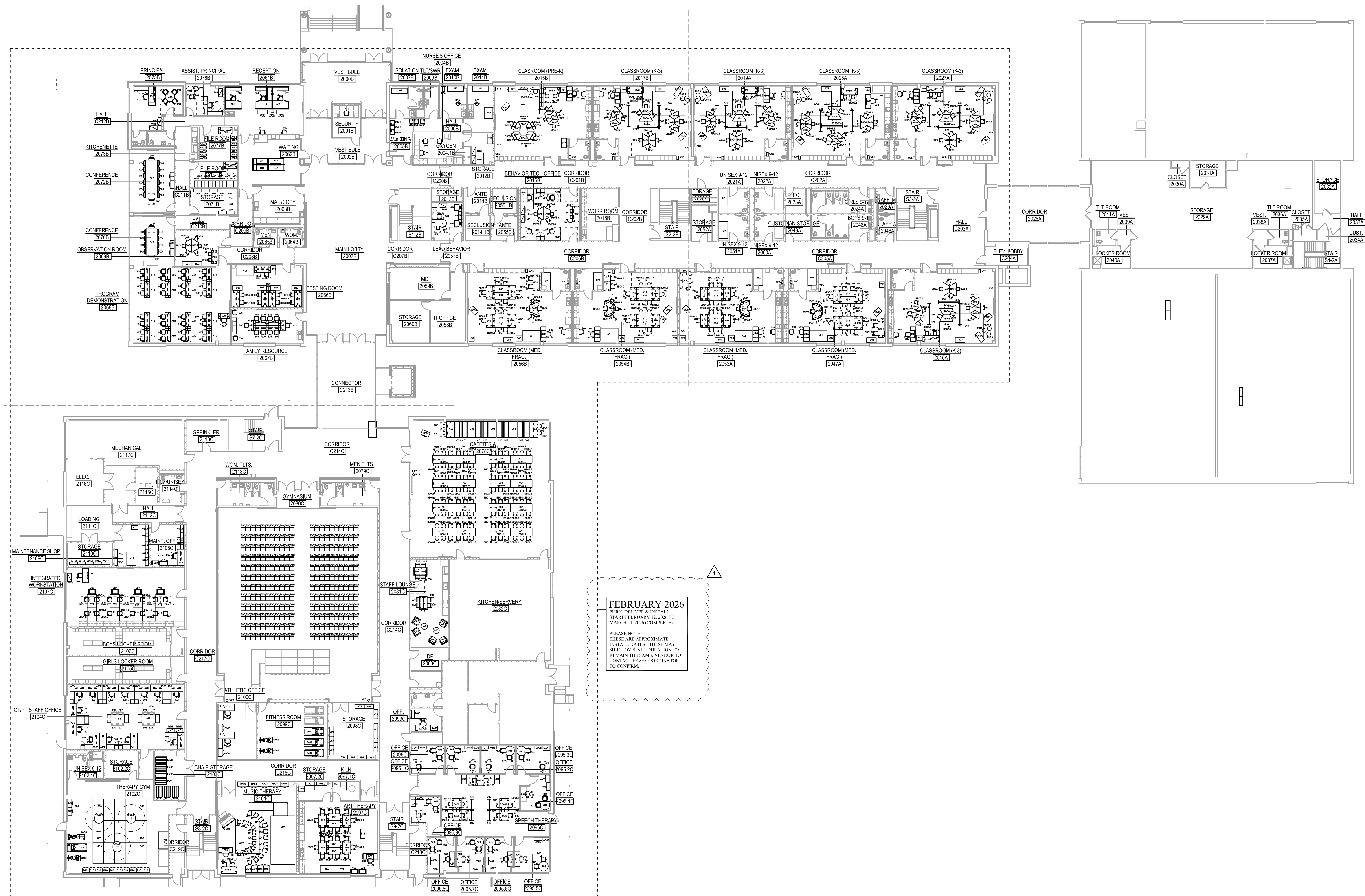
KNEE CLEARANCE: 30"W x 19"D x 27"H

IMAGE:



NOTE: Basis of design specification provided. Substitutions permitted per section 012500 Sustitution Procedures provided in project manual.

QUANTITY:	Code	A01	
	Room Number		Quantity
	2061B		1
	SUB TOTAL		1



1 OVERALL SECOND LEVEL FURNITURE PLAN
1/16"=1'-0"

