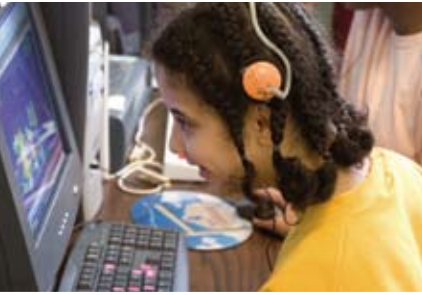
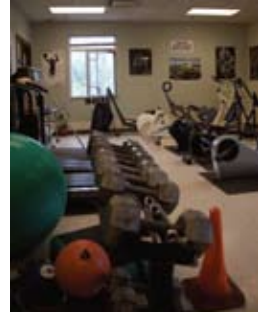


WHITNEY HIGH SCHOOL EAST/WEST

Individual Achievement for all Students



DEDICATED TO STUDENT SUCCESS IN AN ENVIRONMENT WHERE SAFETY
AND QUALITY OF LIFE ARE AN INTEGRAL PART OF EVERYTHING WE DO



ACES Whitney High School East/West is a learning community dedicated to serving students from ages 14 to 21 who exhibit a wide range of cognitive, physical, behavioral, language and medical challenges. The students are our top priority and the school is committed to providing the highest quality education in an electrifying and caring atmosphere where the entire staff functions in sync with the main goal of improving student performance and the quality of life for each and every student.

All staff including classroom teachers, teacher assistant/drivers, speech, occupational, and physical therapists, and specialists in art, music, vocational education, mental health, nursing and one-to-one aides collaborate to ensure that students have every advantage they will need to succeed. Students get a feeling of belonging and acceptance for who they are and all they can be in an atmosphere where there are high expectations for each individual student.

Every staff member has a passion and commitment to doing what is best for students. With a pervasive dedication staff members use every available strategy to ensure successful student communication of their needs, desires, feelings, ideas, and choices. Using Assistive and Alternative Communication, picture schedules, signing, gestures, choice making, computer access, communication picture books and visual communication staff work to provide students with the communication skills necessary for success.

There is an ongoing commitment to continuous improvement which is reflected in the Developmental Curriculum, Environmental Design for Student Success and Alternative Assessment initiatives which are all designed to assist students move along a continuum of learning where individual needs can be met regardless of the student's cognitive level.

In addition to its academic mission, the school places a strong emphasis on transition to life and work including self-advocacy and self-determination. These areas establish the foundation for all student programming. In collaboration with all social service agencies that are involved with our students i.e. School Districts, DMR, DCF, DHMAS, Protection and Advocacy, Consulting Psychiatric services, student's primary care physicians, Orthopedic, CT Rehabilitation Services, BESB, and parent advocates. The school strives to maximize all efforts to improve the quality of our student's education, health, safety and quality of life.

"A great pleasure in life is doing what people say you cannot do."

Walter Bagehot

West - 205 Skiff St. Hamden, CT 06517

Tel: 203.407.4500 Fax: 203.407.4592

East - 261 Skiff St. Hamden CT, 06517

Tel: 203.281.3577 Fax: 203.248.8312

www.aces.org/schools/whew

The program also functions with the three transition areas (employment, independent living, and community participation) foremost in planning for each student. The curriculum includes social interaction, work exposure and experience, life skills, career exploration, and academic courses needed for High School credit if required. The program also provides extensive mental health services, occupational therapy, physical therapy, speech therapy, music therapy, PE, art and nursing care.

All aspects of the program work together to provide the wide array of services our students need for success. A variety of programs and offerings help make Whitney High School East/West the right place for students that thrive in an extended family atmosphere where their needs and safety come first.

Some of the activities that help make us a successful and unique program are:

- Sensory Room with Specialized Orthopedic equipment
- Functional Living Skills Apartment
- Aqua therapy
- Swimming
- Bowling
- Community Paid Work Sites: Clerical, Cleaning, Order Packing, Weight Scaling, Conveyor Belt Assembly Line, Food Preparation, Dish Washing, Data Entry
- Community Volunteer Sites: Retail, Landscaping, Animal Shelter, Church Bulletins, Clerical
- Integrated Work Floor for Paid Employment: Assembly, Packaging, Sorting, Clerical, Material handling, Piece work
- Student Run Businesses
- Boy Scouts/Girl Scouts
- Hiking
- Educational/Recreational Field trips
- Community Based Life Skills
- Pottery, Art, Drama Productions
- Music/Music Therapy, Drum Group, Chorus
- Yearbook Production
- PE/Physical Fitness
- Total Program Participation in Theme Based Learning Units



WHITNEY HIGH SCHOOL EAST/WEST

West - 205 Skiff St. Hamden, CT 06517
Tel: 203.407.4500 Fax: 203.407.4592

East - 261 Skiff St. Hamden CT, 06517
Tel: 203.281.3577 Fax: 203.248.8312

www.aces.org/schools/whew

aces

AREA COOPERATIVE EDUCATIONAL SERVICES