



THE RESOURCE FOR IMPROVING PUBLIC EDUCATION



2010-2011 ANNUAL REPORT

TABLE OF CONTENTS



Mission	1
Governing Board	2
Message from the Executive Director	3
About ACES	4
Solving Identified Needs	5
Empowering Students	6
Meeting Educational Challenges	7
Schools	8
Services	9
Central Administration	11
2010-2011 Expenditures	12
2011-2012 Budgets	13
2010-2011 Service Recipients	14
Major Interagency Relationships and Sources of Funding	15
Organizational Chart	16
Directory	17

Area Cooperative Educational Services does not discriminate on the basis of race, color, age, ethnicity, national origin, gender, disability or sexual orientation.

Copyright ©2011 Area Cooperative Educational Services - This publication is protected by copyright and all rights are reserved. No parts of this document may be reproduced or transmitted in any form or by any means, electronic or mechanical, for any purpose, without the express permission of Area Cooperative Educational Services.

MISSION / ORGANIZATIONAL BELIEFS



Mission

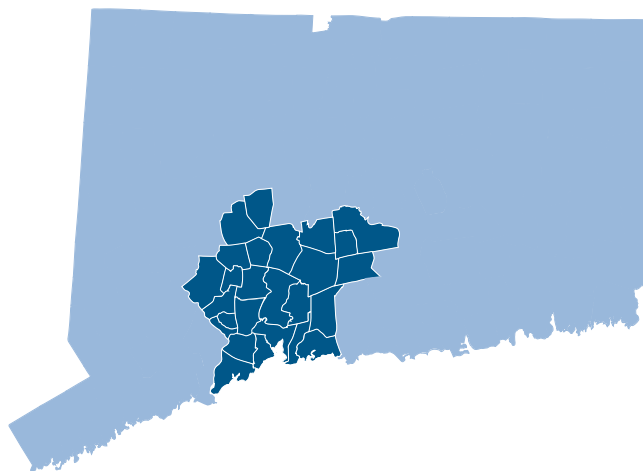
The Mission of ACES, a leader and innovator in education, is to empower our students, member districts, and other clients to meet educational and life challenges in the changing global environment by providing collaborative, customized, cost effective solutions to meet identified needs of our educational community.

Organizational Beliefs

- » Each individual has inherent worth
- » All individuals can learn
- » High expectations and effort are essential for higher achievement
- » Quality education provides the foundation for the success of the individual and the community
- » Diversity strengthens an organization
- » Individuals are accountable for their actions
- » Everyone has a responsibility to each other and to contribute to the common good
- » Honesty and respect are essential for building trusting relationships
- » A positive attitude enhances performance
- » Collaboration enhances productivity and generates creativity
- » Families are essential partners in education
- » The willingness to change is necessary for individuals to grow and organizations to thrive

GOVERNING BOARD

Ansonia	Fran DiGiorgi
Bethany	Janet Finneran, Fiscal Officer
Branford	Judith Hotz
Cheshire	Stephen Mrowka
Derby	Ken Marcucio
East Haven	Vacant
Hamden	Michael Dolan
Meriden	John Lineen, Jr.
Middletown	Sally Boske
Milford	Jack O'Connell
Naugatuck	James Scully
New Haven	Vacant
North Branford	Marie Diamond
North Haven	Alicia Clapp
Orange	Kristen Powell, Vice Chair
Oxford	Paula Guillet
Regional District #5 (Amity)	Sue Cohen
Regional District #13 (Durham, Middlefield)	William Currilin, Chair
Regional District #16 (Prospect, Beacon Falls)	Sheryl Feducia
Seymour	Bruce Baker
Wallingford	Thomas Hennessey
Waterbury	John Theriault
West Haven	Vacant
Wolcott	Mary Kelly
Woodbridge	Vacant



MESSAGE FROM THE EXECUTIVE DIRECTOR



Greetings:

For more than 40 years Area Cooperative Educational Services has supported the improvement of public education through the programs and services we deliver to our 25 member school districts, their students and families, and the ACES region. This Annual Report will provide you with a glimpse into the wide variety of those programs and services. In addition, we've included three outstanding examples of programming from the past year – our new student program, the Center for Autism Spectrum and Developmental Disorders; “Green, Green Wintergreen,” a year-long curricular initiative in technology and environmental sustainability at our Wintergreen Interdistrict Magnet School; and our Connecticut Educational Policy Fellowship Program, a seven-year old initiative for introducing area educational leaders to national education policy, coordinated by our Professional Development and School Improvement division.

A commitment to the four objectives in our 2007-2012 Strategic Plan has motivated our continued improvement in our magnet and special education programs, which serve over 2,200 students from over 58 Connecticut communities. In addition, we have provided professional development and direct support services to over 13,500 Connecticut educators, helping them to achieve their districts' educational goals.

I hope you will take a moment to read about the accomplishments in our internal initiatives and in the services we have provided for others this past year. We hope you will recognize ACES as your primary resource for assisting you in improving education for all our students.

Sincerely,

A handwritten signature in black ink that reads "Craig W. Edmondson". The signature is written in a cursive, flowing style.

Craig W. Edmondson, Ed.D

ABOUT ACES

Area Cooperative Educational Services (ACES) is the Regional Educational Service Center for the twenty-five school districts in south central Connecticut. We exist to improve public education through high quality, cost effective programs and services. Over 40 states operate Educational Service Agencies because of the educational and financial benefits that are obtained through regional collaboration.

We meet the educational needs of our member districts by acting as both a Local Education Agency and as a regional service agency. As a Local Education Agency, we operate schools designed to meet the specific needs of the region, currently special education and the Interdistrict magnet schools.

As a regional service agency, we develop solutions to the most pressing needs of our member school districts. From school-based technical assistance to programs that advance the education workforce, we work hand in hand with state officials and local educators to improve the quality of teaching and learning.

Our revenue sources include tuition and fees for services from local education agencies, state and federal funds, and private sources, including grants and fees for services.

Local school districts appoint a representative to the ACES Governing Board and work collectively to set a strategic direction for the organization based on the educational needs of the region.



CASDD

Center for Autism Spectrum and Developmental Disorders

In July 2010 ACES opened its newest school, Center for Autism Spectrum and Developmental Disorders, to provide educational and clinical programs for students, approximately 11 to 21 years of age, diagnosed on the Autism Spectrum. The Center is committed to and supports the National Autism Council conclusions that the use of evidence-based practices to enhance educational outcomes for students requires the appropriate use of scientifically based research findings, sound professional judgment, and adherence to the values and preferences of families and the community.

Science-based Approaches to Independence and Life Skills (SAILS) is the new educational program housed at the Center. It served 31 students, and was developed as a response to several expressed needs in our region: an identified scarcity of accessible services for adolescents and young adults with autism; family concerns for the continuation of Applied Behavior Analysis aligned instructional and treatment practices for students aging out of current programs; and recent legislation in Connecticut addressing autism services.

The school year includes 190 instructional days, with an extended summer program. Complying with Connecticut's guidelines for the education of those on the autism spectrum, no more than a two week break will occur during any school vacation. Speech therapy, occupational therapy, physical therapy, music therapy and social work services are included in the program. Each educational team is co-led by a state-certified Special Education teacher and a Board Certified Behavior Analyst. The program focuses on teaching skills fundamental to increasing a student's independent functioning within society: functional academics, life skills, executive skills, and community skills. These skills are taught in specifically designed environments in which they are most likely to be required such as a kitchen, living room and school store as well as actual community settings.

"...my son is no longer simply defined by autism and his difficult behaviors. The depths of gratitude and respect I have for the professional staff that has worked with my child... cannot be described with simple words. In reality, how does one ever go about adequately thanking an agency for aiding you in saving the life of your child?"
— current parent



WIMS

Wintergreen Interdistrict Magnet School

ACES Wintergreen Interdistrict Magnet School (WIMS) was the recipient of a federal Enhancing Education Through Technology (EETT) grant (Green, Green Wintergreen) for the 2010-2011 school year. This funding allowed the school to acquire the interactive whiteboards, projectors, conferencing equipment and online software packages to help enliven a year-long curriculum focus concerning the environment, sustainability of resources, and renewable energy sources. The school forged partnerships with experts from Yale University, Southern Connecticut State University and Project Learning Tree to develop model lessons and activities.

In every classroom of this K-8 magnet school, students were delving into the issues concerning our natural environment. They prepared and planted raised-bed gardens outside on the school grounds and cared for small indoor, hydroponic gardens in each classroom to compare the success in each form of cultivation. They built and maintained compost bins to nourish the gardens. Recycling projects were developed throughout the school. Bird and Plant Cams were purchased that allowed the faculty and students to observe the plant and animal life surrounding the school. Students created time lapse videos to show plant growth and inventoried the number and types of birds around them.

The new technology allowed teachers to participate in professional development throughout the year and to fully integrate technology into their lessons. The use of online courses for all grades, allowed students to find the resources needed for their study, as well as archive the results of their work. School administrators are very pleased with the significant progress toward the school's goal of integrating technology into teaching and learning. Now that the technology provided by the EETT grant is in place, the faculty is looking forward to continuing the green theme for another year.

"[The technology] lets me take risks that I may not have tried before. I feel more confident in my teaching. It's so much more accessible. I am not sure I remember how to teach without it."

— Mary Ellen Rourke, 5th Grade Teacher

"With the grant and the funding to provide ubiquitous technology throughout all the classrooms, we never would have been able to fully move our school into a 21st century learning environment. There would have always been a digital divide between classrooms: those that had it and those that did not." — Carol May, WIMS Technology Instructor



EPFP

Education Policy Fellows Program

For the past 7 years, ACES has hosted Connecticut's chapter of the Education Policy Fellows Program, the premier education policy organization in the state. Operating under the auspices of the Institute for Educational Leadership in Washington, DC, Connecticut EPFP offers an annual 10-month professional development program for emerging and mid-level leaders in education. EPFP's mission is to develop strategic, executive leaders in public and private organizations who have the capacity to create and implement sound public policy to improve outcomes for children and young people.

Participants in EPFP hold full-time positions in diverse organizations at the local, state, and national levels. Fellows are supported by their employing agencies, which pay their program tuition. Fellows remain in their full-time positions and use their work environments as the context for examining important leadership and policy issues in their states and at the national level. Some of Connecticut's 2010-2011 Fellows currently hold leadership positions at the Connecticut State Department of Education, our Regional Education Service Centers, and in schools and districts throughout the state.

EPFP brings Fellows and ideas together through a variety of onsite learning activities, and through electronic networking and information sharing. Connecticut EPFP's

field study experience to New Orleans has become a model for other state EPFP chapters. The Institute for Educational Leadership also conducts a national conference, the Washington Policy Seminar, for Fellows from all the sites to increase Fellows' knowledge of national policy issues and processes and gives them a chance to explore the impact of national policies on their work.

"The EPFP experience enabled me to connect the dots between my practice as a building leader and the world of policy-making that surrounds and shapes that work. I was able to zoom out from the ground level to see the profession from orbit, down into a modern laboratory setting in New Orleans where policies are driving educators into new frontiers, then back to Earth to put the lessons learned into practice. The experience radically change my practice."

– Scott Ratchford, Principal, Berlin

"My involvement in the 2010-2011 EPFP served as my own professional learning community (PLC). Each meeting was humorous, thought-provoking and challenging. In retrospect, I was sharpened by my EPFP colleagues, facilitators and this experience." – Kathleen Wedge, CT State Department of Education



Front Row (l-r): Patrick Flynn, ACES; Kathleen Wedge, CT State Department of Education; Leslie Abbatiello, ACES; Steve Anderson, East Haven; Rose DeLauro, US Congress, CT District 3; Chris Montini, Naugatuck; Rob Kelly, CSDE Back Row (l-r): Scott Ratchford, Berlin; Tom Moore, West Hartford; Scott Nichol, Region 13; Terrell Hill, Hartford; Travis Rose, CSDE

As a Local Education Agency, ACES operates a number of schools and educational programs serving the needs of member school districts across the region. The two primary district needs that we address in our schools are: a) issues of academic achievement stemming from racial, ethnic and economic isolation; and b) educating students whose disabilities pose challenges that exceed the capacity of local districts. In response, we provide rigorous academic curricula through three Interdistrict Magnet Schools enrolling nearly 1,700 students, five special education schools enrolling close to 600 students, and a number of district-based programs.

Interdistrict Magnet Schools

ACES Educational Center for the Arts (ECA) is the oldest of ACES four magnet schools. This half-day program serves 300 students in grades 9-12 who are highly motivated in the visual, music, dance, theatre and literary arts. Students attend ECA in the afternoon to work with professional artists. Students earn credit at their home high school for their work at ECA. The school is located in the Audubon Arts District in New Haven.

ACES Thomas Edison Middle School (TEMS) serves 718 sixth, seventh and eighth grade students from Berlin, Cromwell, Meriden, Region 13, Middletown, Wallingford, and Waterbury. TEMS focuses on Math, Science and Technology through a hands-on exploratory method of learning.

ACES Wintergreen Interdistrict Magnet School provides a comprehensive liberal arts education to 636 Kindergarten through eighth grade students from the communities of Hamden, Meriden, New Haven, Wallingford, and Woodbridge. The school focuses on developmentally appropriate instruction within an extended school day and year, the integration of technology into the curriculum, and Spanish language study at each grade level. In addition, the school emphasizes the role of the arts in learning.

Special Education Schools

ACES Center for Autism Spectrum and Developmental Disorders is a new educational and clinical program serving 31 students diagnosed on the Autism Spectrum. The primary goal of the program is to provide science-based instruction, training, and behavior intervention programs that promote functional independence.

ACES Mill Road School is a K-8 school which encompasses three programs: The Mill Road Program, serves children K-8th grade with serious social, emotional and behavioral difficulties, including students on the autism spectrum; The Learning Center, a regular education initiative, provides programming for New Haven students 4th-6th grade who demonstrate some difficulties academically; and New Haven Urban Youth Elementary Program, a combined regular and special education program, services students with emotional, educational and social issues in an integrated environment, K-5th grade.

ACES Whitney High School East and West serves multi-handicapped students, ages 14 to 21, who meet high school requirements. The educational program helps students to develop in the areas of vocational, life, communication and social skills.

ACES Whitney High School North provides a positive, individualized, and multifaceted learning environment which allows students with serious emotional disabilities, grades 9-12, to maximize both their capabilities and potential for happiness and well-being. The program goals include enhancing communication systems, social skills, cognitive skills, student/family support systems, and life skills, as well as facilitating access to community resources.

ACES Village School consists of three units: Early Childhood, Early Intensive Behavior Intervention for students on the autism spectrum, and Elementary/Middle School Programs. ACES Village School provides collaborative educational, behavioral, emotional and physical services to children ages 3 to 14, with a range of cognitive, physical, behavioral, language, and medical challenges. Related services include speech, physical and occupational therapies, social services, behavioral services, music therapy and nursing services.

As a Regional Educational Service Center (RES-C), ACES is committed to developing solutions to the most pressing educational needs of the region and state. By leveraging strong local relationships with a broad state-wide network of resources, we deliver high quality, cost efficient services to our member districts. By collaborating, our members receive the benefit of purchasing these high quality services at a much lower rate.

School Improvement Services

ACES Professional Development and School Improvement Division (PDSI) provides districts with high-quality programs, services, resources and technical assistance to build their staff capacity to meet the learning needs of their students. Through consultation, facilitation, and professional development services, PDSI works in collaboration with districts to address their specific needs in both regional and customized formats. The PDSI staff is highly motivated and innovative with expertise in a wide range of content, technology, leadership, assessment, training and administration areas. The PDSI unit focuses on school improvement planning, leadership development, and staff evaluation, offering technical assistance, strategic planning, training, coaching and support for implementation of new initiatives.

ACES Early Childhood Services offers high quality early childhood experiences, which are critical to a child's long-term development and academic success. ACES is committed to increasing the quality of programs by strengthening the connection between our member districts and local child care and school readiness programs in our region. A new grant allowed the development of the Middlesex County Early Head Start Partnership, which will serve 70 infants/toddlers in six communities. Through regional collaboration, we are able to respond to community needs, share best practices, prepare a more qualified workforce, and maximize resources.

Specialized Services

ACES Behavior Services is staffed with experts in the conceptual and technical application of applied behavior analysis. The ability to predict and change behavior are of vital interest to parents, schools and the community, and ACES Behavior Services offers the tools to accomplish this. The department has provided a wide range of training and direct intervention options to school districts, students and parents.



ACES Extension Therapy Services contractual services to member school districts for the special education related services of occupational and physical therapy as prescribed within a student's IEP. As a RES-C familiar with both educational and therapeutic needs, it is a natural vehicle to provide supervision and assurance of an educationally related service.

ACES Technology Services provides support to districts ranging from highly technical infrastructure issues through desktop support and helpdesk services. This service is provided through a collaborative model in which districts are fully engaged in the decisions and technological directions which affect their students and teachers

Regional Educational Programming

ACES Open Choice, established in 1998, provides options for families to choose available openings in urban and suburban schools. Approximately 400 students and 14 school districts participate in this program.

ACES Magnet School Parent Choice is coordinated by ACES Program Development for the ACES region. There were 37 students enrolled from non-member districts into ACES Magnet Schools - WIMS and TEMS.

ACES coordinates five programs funded by the state's Interdistrict Cooperative Grant Program, which fosters academic improvement and a greater understanding of diversity by connecting students from multiple districts.

ACES - West Haven High School Collaborative provides educational services to fifteen students identified with Intellectual Disabilities. Daily programming includes academic, vocational, and social skills instruction.

ACES – New Haven Detention Center provides instruction for pre adjudicated youth while the courts determine their more permanent placement. They are instructed in mathematics, reading, writing, social studies, science, health and current events by certified regular and special education teachers hired and supervised by ACES.

ACES services at the Hospital of St. Raphael fill a critical gap in the hospital's inpatient mental health services for school age children. The program keeps students in the care of the hospital's Children's Psychiatric Emergency Services (CPES) on pace academically. The program supports the transition of students in and out of the hospital by serving as a liaison between the family, school, and CPES. Daily group and individualized instruction are delivered by a certified special education teacher.

ACES ACCESS supports the career development and transition for a multi-challenged adult population (ages 21 and above). The program provides vocational training and support to adults with disabilities in Greater New Haven in the following areas: Individualized Support assists the individual in securing and sustaining competitive employment in the community. Group Support assists individuals working in a group setting with other program clients and company employees. Volunteer Services assist individuals in obtaining and participating in volunteer opportunities in the community to enhance employability skills.



CENTRAL ADMINISTRATION

ACES Central Administration is dedicated to providing the sound technology, administration, fiscal and related services necessary to carry out the mission and goals of the agency. ACES Central Administration oversees the smooth and efficient operation of our \$112 million budget, over 877 employees, 14 buildings and 120 vehicles.

ACES Executive Director serves as the Chief Executive Officer of ACES as a regional service agency and as the Superintendent of ACES schools.

ACES Assistant Executive Director for Curriculum and Programs oversees the development, delivery, and assessment of teaching and learning within ACES schools and education programs.

ACES Assistant Executive Director for Finance and Operations oversees the agency's Fiscal Services, Buildings and Grounds, Transportation Services, all outsourced food services, and serves as a risk manager for the agency's insurances.

ACES Fiscal Services processes all purchase orders and invoices for our \$112 million budget, as well as biweekly payroll for over 877 employees.

ACES Human Resources manages the agency's efforts to recruit, hire and retain a diverse workforce. This includes new employee orientation; training for employees in the areas of sexual harassment, protection & advocacy, child abuse/neglect and OSHA; benefits administration; employee relations; responding to employees' inquiries/complaints/grievances; managing leaves; interpreting and mediating contractual issues and working conditions; union negotiations; worker's compensation; employment verifications; attorneys' requests; wage garnishments; teachers certification and retirement; minority teacher recruitment; management of the MUNIS Self Service; job postings; and, collaborative work with school districts, and Regional Educational Services Centers on projects pertinent to delivering quality educational services.

ACES Marketing and Public Information seeks to increase the organization's visibility across the region and oversees the production of all internal and external publications.

ACES Program Development creates new ACES programs to respond to the needs of its own schools and programs and those of its member districts, secures resources to pilot, expand and sustain quality educational programs, and convenes and supports the ACES Education Foundation.

ACES Related Services provides ACES internal schools and school-based collaborative programs in West Haven and at the Hospital of Saint Raphael with specialized services such as: social work, developmental guidance, psychology services, speech, physical and occupational therapies, assistive technology, nursing, and psychiatric counseling services.

ACES Technology Services provides computer-related services to ACES programs, staff and students. These services include network and computer systems infrastructure, planning and maintenance, help desk support, application development and support and technology planning.



2010-2011 EXPENDITURES

Description	Source	Budget
INSTRUCTIONAL PROGRAMS		
Special Education		
Gardening for Life 10/09-9/10	F	3,974
Mill Rd	L	5,984,775
Mill Rd Student Activities	O	15,019
SAILS - Standard	L	601,791
SAILS - Intensive	L	888,769
Summer School	L	1,569,829
Transportation	L	2,565,603
Village Counseling Grant	F	284,120
Village EIBI	L	3,709,673
Village School	L	5,940,770
Village Student Activities	O	6,205
West Haven High Program	L	302,821
Whitney High School East & West	L	8,131,040
Whitney High School North	L	4,193,619
WHS East/West Student Activity	O	11,858
WHS North Student Activity	O	26,098
Subtotal Special Education		34,235,964
Magnet Schools		
After School-TEMS/WIMS	S	128,562
CAMS Leadership Grant 09/10	F	23,419
ECA Magnet Grant	S	1,515,618
ECA Student Activities	O	43,212
Educational Center for the Arts	S,L	2,509,830
Magnet Transportation-WIMS	S	189,983
MSAP-Learning Through Science	F	389,083
TEMS Magnet Grant	S	3,197,207
TEMS Student Activities	O	16,405
Thomas Edison Middle School	S,L	9,394,950
Title I Improving Basic Programs 6/12	F	256,427
Title I Improving Basic Programs 9/11	F	117,262
Title I Improving Basic Programs ARRA 9/11	F	66,147
Title II A Teachers 06/12	F	32,855
Title II A Teachers 06/11	F	13,974
Title II D E2T2 (ARRA) 8/11	F	140,000
Title IV Safe and Drug Free 6/11	F	7,251
WIMS After School Program	L	5,498
Wintergreen Magnet Grant	S	4,922,520
Wintergreen Magnet School	S,L	7,117,693
Words! Action! Theatre!	S	83,288
Subtotal Magnet Schools		30,171,184
Regular Education		
New Haven CHOICE	L	251,329
New Haven FY 10 Carryover	O	21,442
New Haven Magnet Schools	L	326,093
New Haven Voluntary Public Choice	L	51,368
NH Betsy Ross Arts Magnet School	L	676,953
NH Cooperative High School	L	393,943
St. Raphael's Instructional Summer Program	L	7,460
St. Raphael's Instructional	L	118,414
Urban Youth	L	1,149,142
Subtotal Regular Education		2,996,144
Interdistrict Programs		
A Passion for Justice	S	49,069
LUCID	S	108,681
Sister Schools	S	31,171
The Write Stuff	S	110,158
Subtotal Interdistrict Programs		299,079
Justice Programs		
New Haven Detention Center	L	418,660
New Haven Detention Center-Summer	L	26,397
Subtotal Justice Programs		445,057
TOTAL INSTRUCTIONAL PROGRAMS		68,147,428
PUPIL PERSONNEL & SUPPORT SERVICES		
Assistive Technology	L	315,478
Asthma Initiatives	L, O	109
Behavioral Services	L	1,427,627
Extension Therapy Services	L	2,408,667
Extension Therapy Services-Handwriting Project	O	3,860
Pupil Services	L	670,761
Student Career & Curriculum Services	L	399,378
Transition Counseling	O	73,000
TOTAL PUPIL PERSONNEL & SUPPORT SERVICES		5,298,880
EARLY CHILDHOOD-EXTERNAL		
Child Development Training	S,L,O	27,898
Early Childhood Services	S,L,O	473,757
Early Head Start 12/09-09/11	F	243,734
Early Head Start 10/10-09/11	F	444,848
East Haven Discovery Grant	O	2,461
East Haven United Way	O	4,059
Hamden Discovery Grant	O	951
Hamden Foundation United Way	O	10,738
KIDS PACK	O	4,860
Middletown QE	O	9,025
Mill Rd Family Resource Center	O	51
New Haven QE II	L	22,248
West Haven QE	L	24,066
TOTAL EARLY CHILDHOOD-EXTERNAL		1,268,696
PROFESSIONAL DEVELOPMENT PROGRAMS		
Account for Learning TA 6/11	S	211,575
ACES Internal Professional Development	L	10,064
Adv. Alt. Prog.-Library Media Spec.	L	94,763
Conference Management	S,L,O	89,536
Connecticut Thinkfinity	O	8,602
Distance Learning Project	L	5,942
Economics-Middle School Teachers 09-10	O	446
Economics-Middle School Teachers 10-11	O	20,000
EPFP-Title II Part A Teachers	S,L	22,390
ET2 RESC Tech 7/10-6/11	S	56,400
MSP Carryover 6/11-9/11	S	18,230
MSP Math Grant 1/11-6/30/12	S	58,839
MSP Math Grant 1/10-12/10	S	126,614
New Haven Action Research	L	60,847
New Haven Supplemental SIG Funds	L	48,681
New Haven TEAM Support	L	322,329

Description	Source	Budget
NEW HAVEN TECHNICAL SUPPORT		
PDSI Conference Services	L	947
PDSI District Agent	L	22,490
PDSI Staff Development	L	10,169
Priority Schools	L	102,730
Professional Development/School Improvement	S, L, O	114,919
RESC Moodle Services	L	2,112,219
Striving Readers	S	15,000
Teaching American History 7/15/09-7/14/12	F	100,000
Teaching American History 7/1/08-8/31/11	F	287,597
Teaching American History 9/1/10-8/31/13	F	342,155
Teaching with Primary Sources	F	243,995
TEAM (Best-ACES)	O	18,808
TEAM (Best-Regional)	O	7,750
Title II D Educ Tech ARRA 8/11	S	91,500
Title II Tech	F	573
Title III A English Acq. 6/11	F	25
Title III A English Acq. 6/12	S	9,907
Virtual High School	S	32,060
TOTAL PROFESSIONAL DEVELOPMENT PROGRAMS	L	25,534
RESC ENTITLEMENTS		4,693,636
RESC ENTITLEMENTS		
Administering Open Choice	S	183,692
Choice Transportation	S	1,675,350
RESC Restricted/Unrestricted	S	209,376
RESC Title II D Tech 06/11	O	31,118
TOTAL RESC ENTITLEMENTS		2,099,536
CAREER SERVICES		
ACCESS-Supported Employment	S,O	1,779,342
Vocational Support Services	L,O	194,270
Workforce Alliance WIA Youth	O	69,818
Workforce Alliance ST Youth Employment	O	497
Workforce Alliance Summer-State	O	37,430
Workforce Alliance Summer-TANF	O	40,000
TOTAL CAREER SERVICES		2,121,357
ADMINISTRATION		
Central Office		
ACES Staff Activities	O	243
Ofc of the Asst Exec Director-Finance & OPS	L	244,994
Ofc of the Asst Exec Director-Prog & Curriculum	L	231,170
Fiscal Services	L	1,109,542
Governing Board	L	195,849
HR Fingerprint Processing	O	48,521
Human Resources	L	802,498
Information and Marketing Services	L	329,123
Office of the Executive Director	L	374,120
Operations Maintenance	L	385,196
Program Development	L	560,346
Technology Services	L	3,754,055
School Construction Consulting	L	5,551
Wellness Activities	O	7,740
Subtotal Central Office		8,048,948
Building Operations		
ACCESS-60 United Dr Capital Project	S,L	1,579
Capital Improvements	L	89,665
Deferred Maintenance	L	8,935
ECA/Little Theatre Capital Project	S,O	202,286
Operations-204 State Street	L	184,756
Operations-60 United Drive	S,L,O	235,676
Operations-CASDD	S,L	319,118
Operations-ECA	S,L,O	579,384
Operations-Food Services	S,L,O	703,591
Operations-Little Theatre	L	17,788
Operations-Mill Road	S,L	747,954
Operations-Peter C. Young Building	L	430,630
Operations-Staff Development	L	405,396
Operations-TEMS	L	1,785,543
Operations-Village School	L	713,027
Operations-Whitney East	L	470,170
Operations-Whitney N & W	L	630,033
Operations-Wintergreen	L	1,308,976
Operations-ECA/LT Facility	L,O	71,589
Subtotal		8,906,096
TOTAL ADMINISTRATION		16,955,044
GRAND TOTAL EXPENDITURES		\$100,584,577

Legend of Funding Sources: L Local, F Federal, S State, O Other

2011-2012 BUDGETS

Description	Source	Budget
INSTRUCTIONAL PROGRAMS		
Special Education		
Mill Rd	L	6,049,481
Mill Rd Student Activities	O	12,854 *
SAILS Program - Standard	L	734,593
SAILS Program - Intensive	L	2,641,620
Summer School	L	1,804,075
Transportation	S,L	2,521,035
Village EIBI	L	3,991,688
Village School	L	5,924,826
Village Student Activities	O	7,403 *
West Haven High Program	L	318,462
Whitney High School East & West	L	8,519,285
Whitney High School North	L	4,459,234
WHS East/West Student Activity	O	12,596 *
WHS North Student Activity	O	12,305 *
Subtotal Special Education		37,009,457
Magnet Schools		
After School Grant - TEMS/WIMS	S	100,000 *
ECA Magnet Grant	S	1,555,242
ECA Student Activities	O	49,701 *
Educational Center for the Arts	S,L	2,632,548
Magnet Transportation - WIMS	S	162,500
MSAP - Learning through Science	F	84,684
TEMS Magnet Grant	S	3,381,725
TEMS Student Activities	O	17,065 *
Thomas Edison Middle School	S,L	9,406,374
Title I ARRA	F	448
Title I Improving Basic Programs 6/12	F	152,778
Title I Improving Basic Programs 6/13	F	379,636
WIMS After School Program	L	22,604 *
Wintergreen Magnet Grant	S	4,922,520
Wintergreen Magnet School	S,L	7,296,419
Words! Action! Theatre!	S	137,502
Subtotal Magnet Schools		30,301,746
Regular Education		
New Haven CHOICE	L	300,000 *
New Haven FY 11 Carryover	O	143,190
New Haven Magnet Schools	L	270,000 *
NH Betsy Ross Arts Magnet School	L	948,156
NH Cooperative High School	L	555,218
NH Voluntary Public School Choice	L	40,000
St. Raphael's Instructional	L	124,144
Urban Youth	L	1,179,750
Subtotal Regular Education		3,560,458
Interdistrict Programs		
A Passion for Justice	S	39,040
LUCID	S	99,883
Math Counts	S	103,560
Sharing Our Stories	S	42,391
Sister Schools	S	71,563
The Write Stuff	S	110,879
Subtotal Interdistrict Programs		467,316
Justice Programs		
New Haven Detention Center-Summer	L	59,449
Subtotal Justice Programs		59,449
TOTAL INSTRUCTIONAL PROGRAMS		71,398,426

PUPIL PERSONNEL & SUPPORT SERVICES		
Assistive Technology	L	337,362
Asthma Initiatives	L,O	170
Behavioral Services	L	1,102,333
ETS-Handwriting Without Tears	O	1,116
Extension Therapy Services	L	2,543,177
Pupil Services	L	728,360
Student Career & Curriculum Services	L	472,378
Transition Counseling	O	143,000
TOTAL PUPIL PERSONNEL & SUPPORT SERVICES		5,327,896

EARLY CHILDHOOD-EXTERNAL		
Child Development Training	S,L,O	16,997 *
Early Childhood Services	S,L,O	337,489
Early Head Start Carryover (ARRA) 12/09-9/11	F	100,334
Early Head Start Yr. 2 (ARRA) 10/10-9/11	F	421,220
Early Head Start Compr Child Dev Prog 10/11-9/12	F	845,448 *
Early Learning Arts Grant Match	O	672
East Haven Discovery Grant	O	15,406 *
East Haven United Way	O	5,841
Middletown QE	L	9,025
Mill Rd Family Resource Center	O	1,454 *
New Haven QE II	L	22,248 *
West Haven QE	L	24,066
TOTAL EARLY CHILDHOOD-EXTERNAL		1,800,200

PROFESSIONAL DEVELOPMENT PROGRAMS		
Adv. Alt. Prog.-Library Media Spec.	L	53,782 *
Account for Learning TA 6/12	S	306,000 *
PDSI Staff Development	L	60,344 *
ACES Internal Professional Development	L	71,650 *
Conference Management	S,L,O	80,553 *
Connecticut Thinkfinity	O	10,273
Distance Learning Project	L	3,986 *
District Title II Technology	L	11,620
Economics -Middle School Teachers	O	20,000 *
EPFF-Title II Part A Teachers	S,L	7,095 *
E2T2 RESC Tech 7/11-6/12	S	74,686
MSP Math Carryover 6/11-9/11	S	72,628
MSP Math Grant 1/11-6/12	S	130,455
New Haven Action Research	L	60,000
New Haven Supplemental SIG Funds	L	41,319
New Haven TEAM Support	L	159,429 *
New Haven Transition Services	L	20,000
Professional Development/School Improvement	S,L,O	2,049,275
PDSI District Agent	L	22,930 *
PDSI Conference Services	L	24,759 *

Description	Source	Budget
Priority Schools	L	313,969 *
RESC Title IID Video 7/11-9/11	S	12,400
Teaching American History 9/10-8/13	F	753,213
Teaching American History 7/11-6/13	F	749,672
Teaching American History 7/08-6/12	F	57,308
Teaching American History 7/09-6/12	F	347,250
Teaching with Primary Sources	O	20,000
TEAM (Best-Regional)	S	103,000
Title III A English Acquisition 6/12	S	7,938
Title II Part A Teachers 6/11	S	47,094 *
Virtual High School	L	1,093 *
Waterbury Technology PD	L	1,892 *
TOTAL PROFESSIONAL DEVELOPMENT PROGRAMS		5,695,613

RESC ENTITLEMENTS		
Administering Open Choice	S	164,572 *
Choice Transportation	S	1,798,250 *
RESC Restricted/Unrestricted	S	209,376 *
RESC Title II D Tech 6/12	O	12,400
TOTAL RESC ENTITLEMENT		2,184,598

CAREER SERVICES		
ACCESS - Gardening	O	988
ACCESS - Supported Employment	S,O	1,856,017 *
BAC/ACCESS Client Activities	O	4,602
Vocational Support Services	L	193,659
Workforce Alliance WIA Youth	O	19,791
Workforce Alliance Summer Youth at Work	O	25,470
Workforce Alliance WIA Youth 11-12	O	80,000
TOTAL CAREER SERVICES		2,180,527

ADMINISTRATION		
Central Office		
ACES Staff Activities	O	349
Ofc of the Asst Exec Director-Finance & OPS	L	266,662
Ofc of the Asst Exec. Director-Programs & Curriculum	L	256,582
Enterprise Activities	L	50,000 *
Fiscal Services	L	1,203,806
Governing Board	L	238,377
HR Fingerprint Processing	O	66,600
Human Resources	L	819,274
Information and Marketing Services	L	323,390
Office of the Executive Director	L	388,539
Operations Maintenance	L	418,732
Program Development	L	585,075
Technology Services	L	3,763,937
Wellness Activities	O	3,693
Subtotal Central Office		8,385,016
Building Operations		
Capital Improvements	L	175,000
Deferred Maintenance	L	60,000
ECA/Little Theatre Capital Project	S,O	5,338,007
Operations-204 State Street	L	221,925
Operations-60 United Drive	S,L,O	254,793
Operations-CASDD	S,L	346,546
Operations-ECA	S,L,O	786,495
Operations-Food Services	S,L,O	887,167
Operations-Little Theatre	L	39,061
Operations-Mill Road	S,L	769,316
Operations-Peter C. Young Building	L	437,567
Operations-Staff Development	L	398,433
Operations-TEMS	L	1,982,435
Operations-Village School	L	659,058
Operations-Whitney East	L	528,818
Operations-Whitney N & W	L	679,378
Operations-Wintergreen	L	1,265,924
Operations-ECA/LT Facility	L,O	83,923
Subtotal Building Operations		14,963,846
TOTAL ADMINISTRATION		23,348,862

GRAND TOTAL 2011-2012 BUDGETS		\$111,936,122
--------------------------------------	--	----------------------

* Estimated Budget

Legend of Funding Sources: L Local, F Federal, S State, O Other

2010-2011 SERVICE RECIPIENTS

	Ansonia	Bethany	Branford	Cheshire	Derby	East Haven	Hamden	Meriden	Middletown	Milford	Naugatuck	New Haven	North Branford	North Haven	Orange	Oxford	Seymour	Wallingford	Waterbury	West Haven	Wolcott	Woodbridge	Reg. Dist #5	Reg. Dist #13	Reg. Dist #16	ACES Programs	Other (#)
Special Education Schools																											
CASDD	x				x	x	x	x		x		x		x			x	x					x				3
Mill Road School	x		x		x	x	x	x	x		x	x	x	x				x	x	x		x					11
Village School	x	x	x	x	x	x	x	x	x	x	x	x	x	x	x	x	x	x	x	x	x		x				13
Whitney East/West	x		x	x	x	x	x	x	x	x		x	x	x				x	x	x			x		x		18
Whitney North	x			x	x	x	x	x	x	x	x	x		x					x	x							8
Magnet Schools																											
ECA			x	x		x	x			x		x	x	x		x	x	x		x			x	x	x		5
TEMS								x	x									x	x					x			3
WIMS	x	x		x		x	x	x		x		x	x					x		x		x					1
Services																											
ACCESS			x	x		x	x	x		x		x	x	x	x			x		x							
Behavior Services	x	x	x		x	x	x	x		x				x	x			x	x			x					7
Early Childhood	x					x	x	x	x			x						x		x							
Extension Therapy	x	x	x		x	x	x				x	x			x			x		x		x	x			x	1
Hospital of Saint Raphael	x		x	x	x	x	x	x	x	x	x	x	x	x				x	x	x	x		x	x	x		68
In-District Collaboratives																					x						
Minority Teacher Recruitment							x	x				x						x	x	x							3
Open Choice	x	x	x	x	x	x	x			x		x	x	x	x			x		x		x	x				
PDSI	x	x	x	x	x	x	x	x	x	x	x	x	x	x	x	x	x	x	x	x	x	x	x	x	x	x	2
Program Development	x	x	x	x	x	x	x	x	x	x	x	x	x	x	x	x		x	x	x		x	x	x	x	x	
Pupil / Related Services																											x
Technology Services	x	x	x	x		x	x	x	x		x		x		x			x	x		x	x			x	x	
Transportation	x	x			x	x	x			x		x			x	x	x			x		x	x	x	x	x	

Major Interagency Relationships and Sources of Funding

ACES maintains strong relationships with the school districts that created and govern the organization. This connection with member districts, plus other local funds, accounts for approximately 73.4% of ACES financial support. Programs ranging from education for students with cognitive, emotional and physical challenges to training programs for staff from the school districts are financially supported by the member school districts through tuition and fees for services.

The second major source of support is the Connecticut State Department of Education (CSDE). ACES receives grants and contracts primarily for state initiatives, such as the Magnet School initiative, Interdistrict Grants, the Open Choice program, Professional Development Activities, School Construction Projects, Enhancing Education Through Technology, and School Readiness programs. These programs have an impact on both school districts and local communities. This support accounts for approximately 19.7% of ACES income.

The third major ACES interagency relationship involves the Connecticut Department of Developmental Services (DDS). ACES principal involvement with this agency is through programs for disabled adults. This funding represents 1.7% of ACES budget.

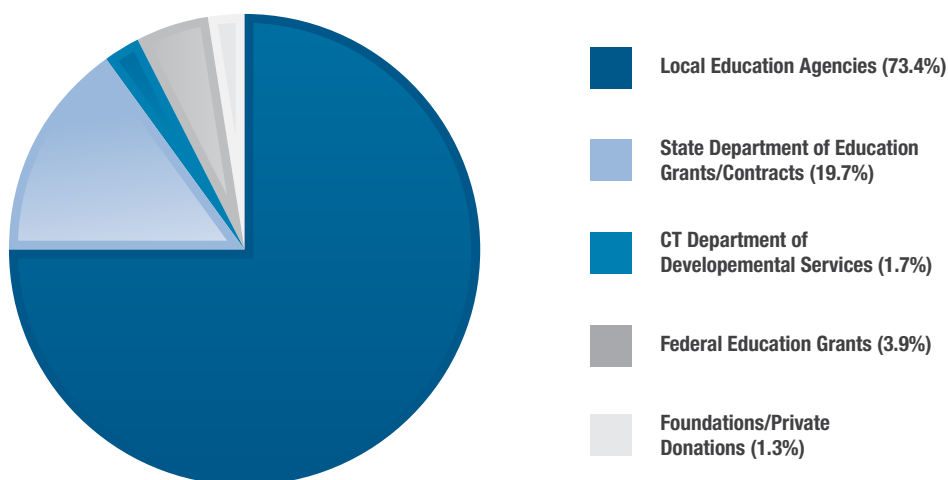
The fourth major source of support for ACES programs is federal funding through grants for educational programming. This source accounts for 3.9% of the total budget.

The final category of major revenue is from private sources in the form of grants from charitable foundations and other special contracts. These grants and “other” contracts represent approximately 1.3% of the ACES annual budget.

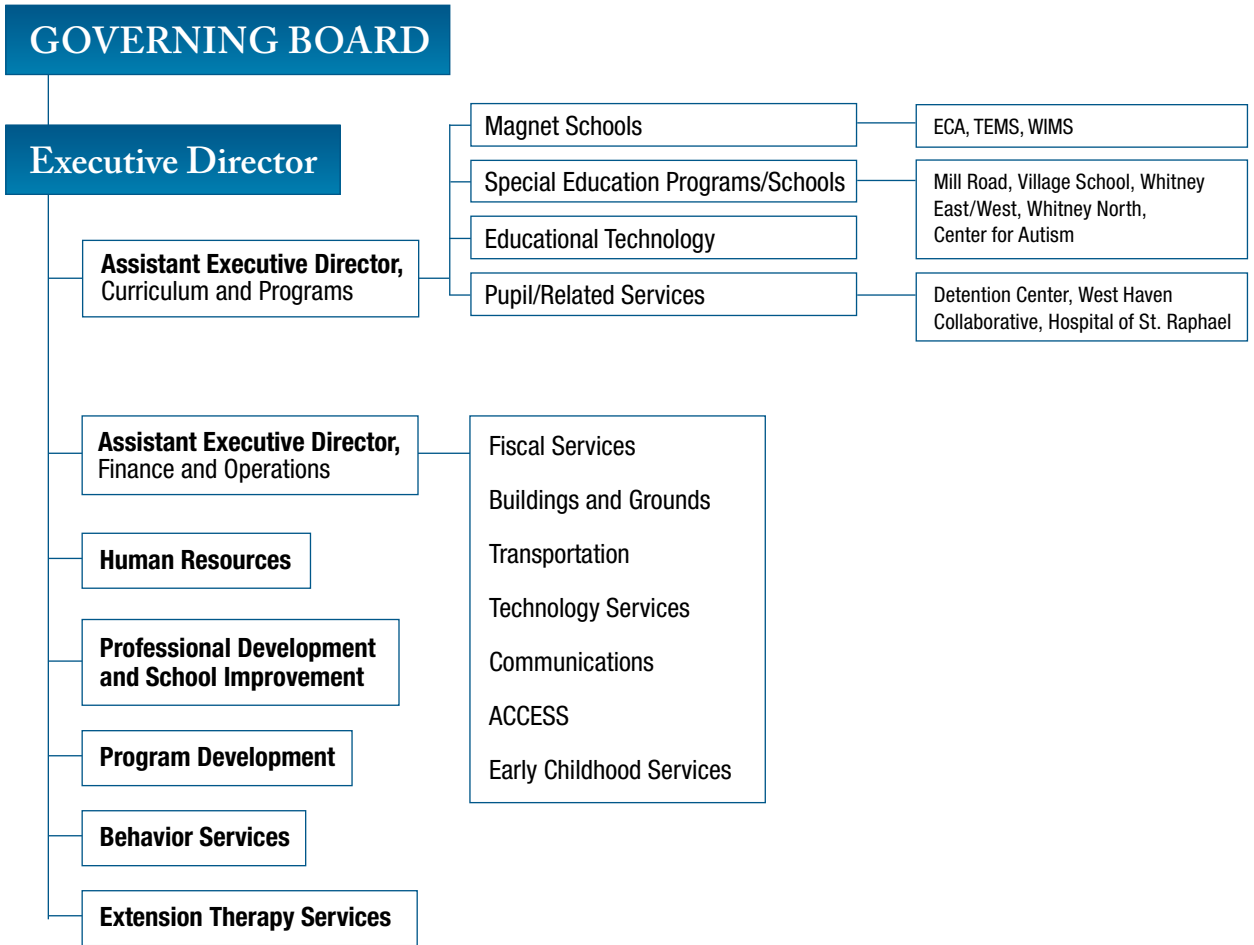
ACES is a member of the Connecticut Alliance of Regional Educational Service Centers and works closely with the other RESCs on collaborative projects.

In 2004 ACES launched the ACES Education Foundation as a separate nonprofit organization. The purpose of the foundation is to identify private sources of funding and raise awareness of the organization’s programs and services. To date the ACES Education Foundation has raised nearly \$650,000 in support of this mission. The New Alliance Foundation and many other business and individual supporters have made generous contributions to realize this effort. This year, the foundation awarded approximately \$31,300 in grants to ACES programs.

Funding Sources



ORGANIZATIONAL CHART 2011-2012



Central Administration

Peter C. Young
Administration Building
 350 State Street
 North Haven, CT 06473
 203.498.6800
 Directions: 203.498.6885

Executive Director
 Craig W. Edmondson, Ed.D.
 203.498.6817

**Assistant Executive Director,
 Curriculum and Programs**
 Ann P. Dombroski, Ed.D.
 203.498.6815

**Assistant Executive Director,
 Finance and Operations**
 Gary J. Shettle
 203.498.6835

Human Resources
 Claudette J. Beamon
 203.498.6810

Program Development
 Carolyn McNally, Ed.D.
 203.498.6842

Marketing and Public Information
 Robert D. Parker
 203.498.6881

Schools

**ACES Center for Autism Spectrum
 and Developmental Disorders**
 26 Old Post Road
 Northford, CT 06472
 Donn Sottolano, Ph.D.
 203.484.9501

**ACES Educational Center
 for the Arts**
 55 Audubon Street
 New Haven, CT 06510
 Alice L. Schilling
 203.777.5451

ACES Mill Road School
 295 Mill Road
 North Haven, CT 06473
 Erika Forte
 203.234.0303

ACES Thomas Edison Middle School
 1355 No. Broad Street
 Meriden, CT 06450
 Karen Habegger
 203.639.8403

ACES Village School
 31 Temple Street
 North Haven, CT 06473
 Carol Bunk
 203.234.7611

ACES Whitney High School
 West & East
 205 Skiff Street / 261 Skiff Street
 Hamden, CT 06517
 Gina Drury
 203.407.4500 / 203.281.3577

ACES Whitney High School North
 205 Skiff Street
 Hamden, CT 06517
 Mark Dougherty
 203.407.4500

**ACES Wintergreen
 Interdistrict Magnet School**
 670 Wintergreen Avenue
 Hamden, CT 06514
 Michelle G. Coogan
 203.281.9668

Services

**Pupil Services and
 Collaborative Programs**
 350 State Street
 North Haven, CT 06473
 Vanessa Taragowski
 203.498.6849

Behavior Services
 26 Old Post Road
 Northford, CT 06472
 Donn Sottolano, Ph.D.
 203.484.9501

Early Childhood Services
 205 Skiff Street
 Hamden, CT 06517
 Alice Torres, Ed.D.
 203.407.4441

**Professional Development
 and School Improvement**
 205 Skiff Street
 Hamden, CT 06517
 Frank Meoli
 203.407.4446

Extension Therapy Services
 205 Skiff Street
 Hamden, CT 06517
 Laura Evangelist
 203.407.4470

ACES ACCESS
 60 United Drive
 North Haven, CT 06473
 Chidi Onukwughu
 203.234.1344

ACES Technology Services
 204 State Street
 North Haven, CT 06473
 Greg Dandio
 203.287.6840

Educational Technology
 350 State Street
 North Haven, CT 06473
 Wanda Wagner
 203.498.6804

ACES Transportation
 60 United Drive
 North Haven, CT 06473
 Dawn Carranzo
 203.234.2406

ACES Buildings and Grounds
 60 United Drive
 North Haven, CT 06473
 Joseph Tommaselli
 203.234.1344

Annual Report Concept & Design:
 eVariant, LCC
www.evariant.com
 302.295.1366

aces

AREA COOPERATIVE EDUCATIONAL SERVICES

350 State Street • North Haven, CT 06473

203.498.6800 • www.aces.org