



Bold Steps

The Next Generation of ACES

2016-2017 ANNUAL REPORT

aces

www.aces.org

Executive Director’s Message	1
Mission and Organizational Beliefs	2
About ACES	3
ACES Member Districts	4
ACES Governing Board	5
ACES At-A-Glance	6
ACES Platforms	7
ACES Six Bold Steps	8
ACES Schools: Interdistrict Magnet Schools	15
ACES Schools: Special Education Schools	17
ACES Services	19
ACES Regional Educational Programming	21
ACES 2016-2017 Teacher of the Year / Executive Director Recognition Awards	24
ACES Central Administration	25
The Connecticut RESC Alliance	26
2016-2017 Service Recipient Chart	27
Interagency Relationships and Funding	28
2016-2017 Expenditures	29
2017-2018 Budget	31
ACES Organizational Chart	33
ACES Directory 2017-2018	35

Area Cooperative Educational Services does not discriminate on the basis of race, color, age, ethnicity, national origin, religion, gender, marital status, disability or sexual orientation.

Copyright © 2017 Area Cooperative Educational Services – This publication is protected by copyright and all rights are reserved. No parts of this document may be reproduced or transmitted in any form or by any means, electronic or mechanical, for any purpose, without the express permission of Area Cooperative Educational Services.



Dear Friends,

In 2016, we launched a new generation of ACES. We took our current mission of “empowering students, districts and clients to meet educational and life challenges in the changing global environment” to heart, and challenged ourselves to envision and to articulate the next generation of ACES. To accomplish this task, we brought together superintendents, community leaders, and staff and asked them the question: What would we have in the next generation of ACES if we could have what we want right now? What emerged from focus groups, strategic design meetings and 1,127 index cards was our design plan, The Next Generation of ACES. Central to our plan are six bold steps. They are:

- 1. Establish a platform structure and platform leaders that will help us to be more agile in our work.**
- 2. Develop new lines of revenue-generating work.**
- 3. Develop streamlined, consistent referral, billing and contract processes.**
- 4. Develop a comprehensive system for employee development, recognition and agency voice.**
- 5. Implement a transparent internal communication process.**
- 6. Advocate on behalf of the region for magnet school funding.**

As the Executive Director in my third year at ACES it has been my pleasure to lead the charge on our new design plan that will guide us for the next several years. I’m pleased to share with you highlights of our work this past year, and hope to engage you with our work going forward.

Sincerely,

A handwritten signature in black ink that reads "Thomas M. Danehy". The signature is written in a cursive, flowing style.

Thomas M. Danehy, Ed.D.
Executive Director



ECA



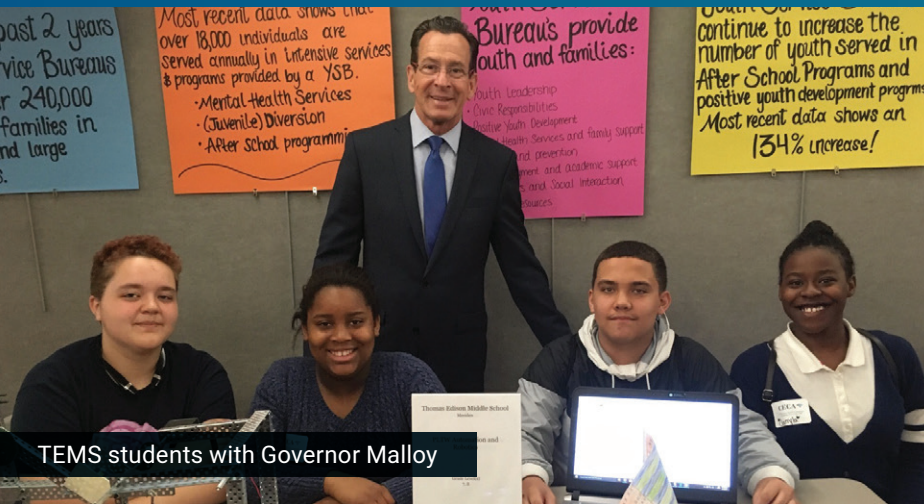
Village School

Mission

To empower our students, member districts and other clients to meet educational and life challenges in the changing global environment by providing collaborative, customized, cost-effective solutions to meet identified needs in our educational community.

Organizational Beliefs

- Each individual has inherent worth
- All individuals can learn
- High expectations and effort are essential for higher achievement
- Quality education provides the foundation for the success of the individual and community
- Diversity strengthens an organization
- Individuals are responsible for their own actions
- Everyone has a responsibility to each other and to contribute to the common good
- Honesty and respect are essential for building trusting relationships
- A positive attitude enhances performance
- Collaboration enhances productivity and generates creativity
- Families are essential partners in education
- The willingness to change is necessary for individuals to grow and organizations to thrive



TEMS students with Governor Malloy



PDSI

About ACES

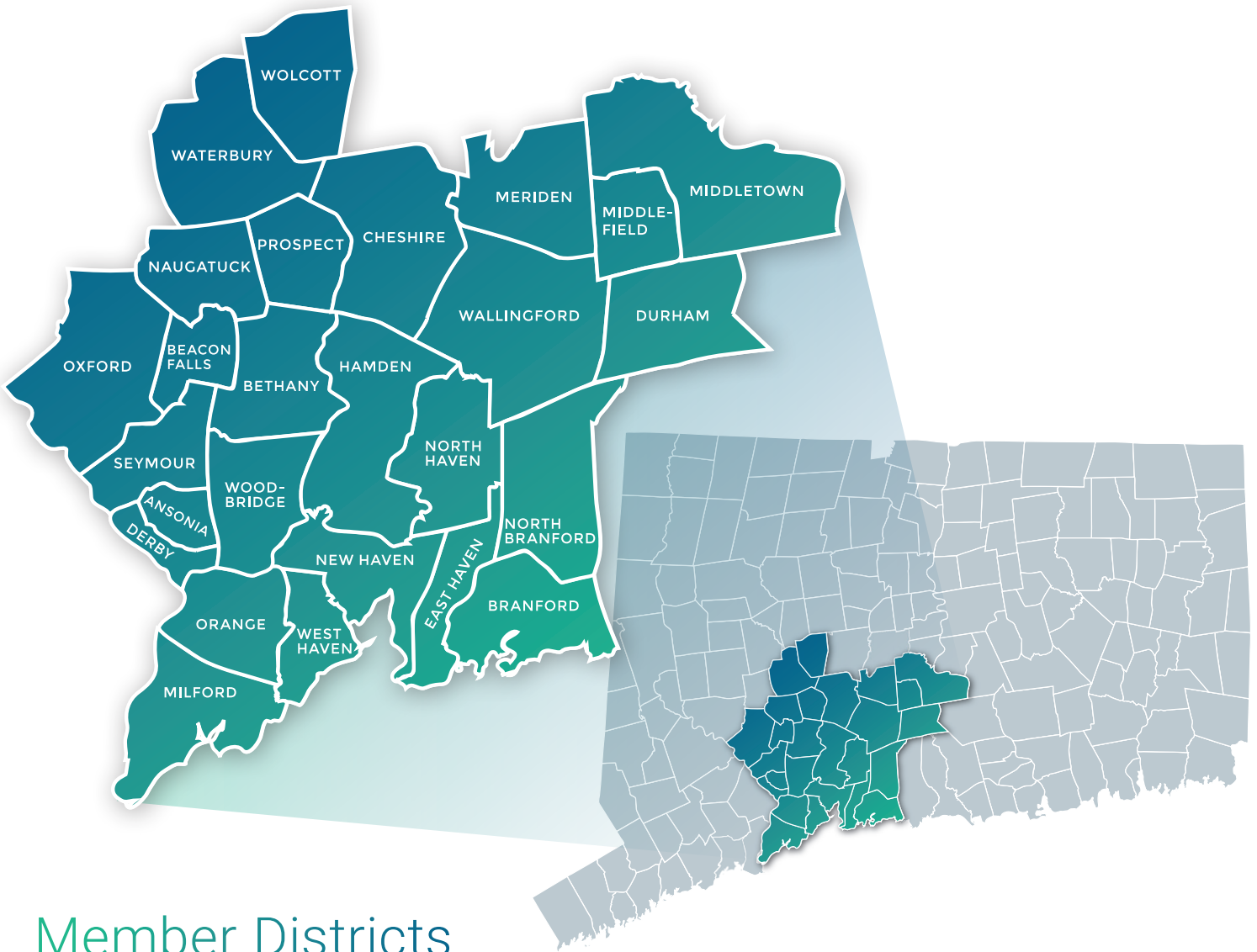
Area Cooperative Educational Services (ACES) has been living its mission: To empower students, member districts, and others to meet educational and life challenges for close to fifty years. ACES is the regional educational service center for the twenty-five communities in New Haven County. ACES is both a non-profit service organization and a school district that serves over 2,000 students in three magnet and five special education schools.

ACES dedication to better serve its community and its commitment to equity and social justice is demonstrated by the wide array of services and programs offered. These programs include adult and vocational programs, interdistrict programs, Open and Magnet School Parent Choice programs, Minority Teacher Recruitment initiatives, behavior services for individuals on the autism spectrum, occupational/ physical therapy, professional development, and technology services.

To learn more about ACES, visit www.aces.org.



ACES Governing Board



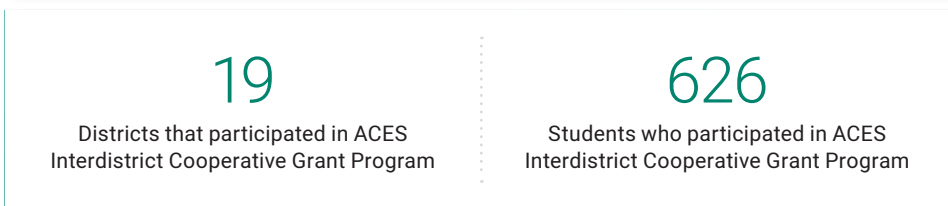
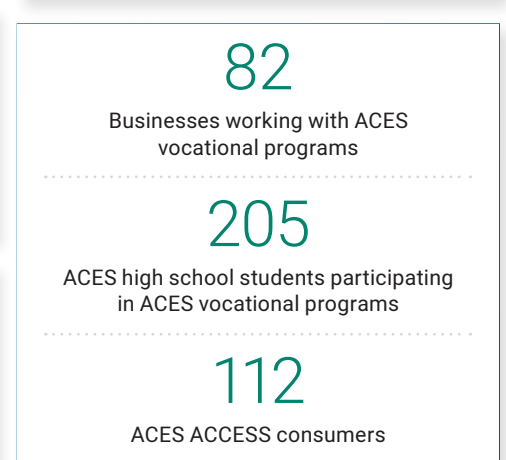
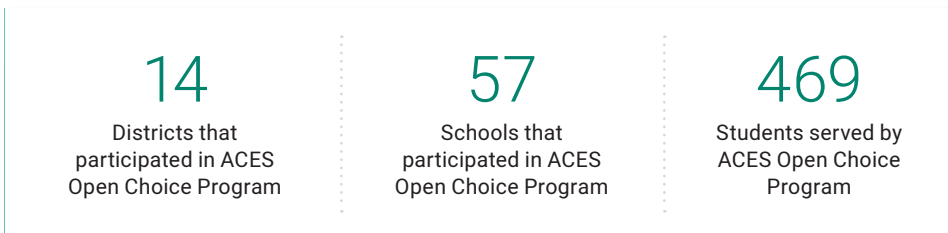
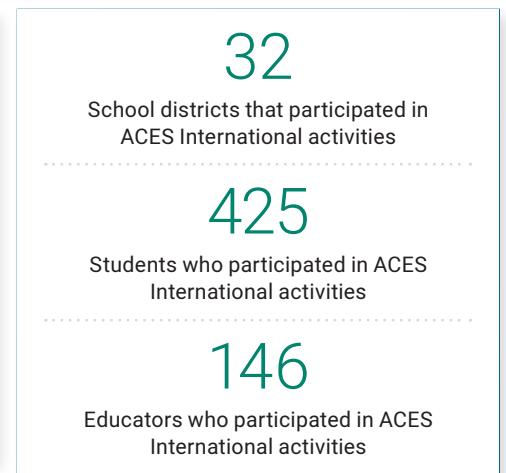
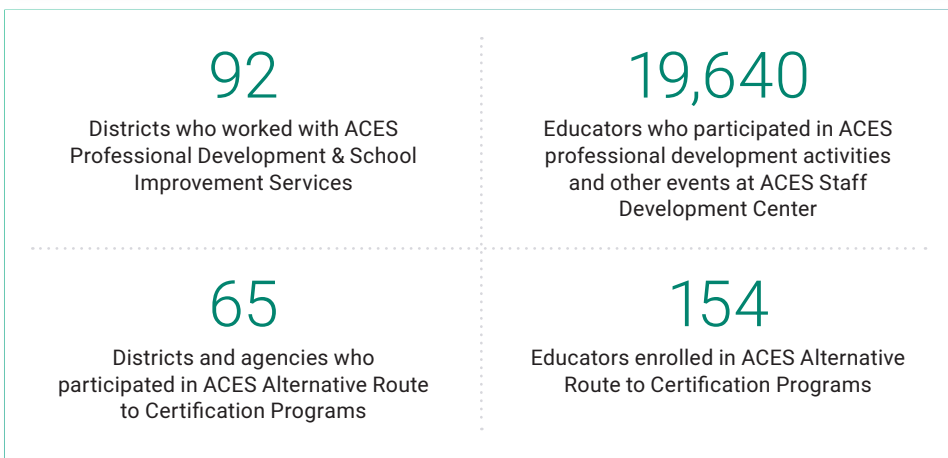
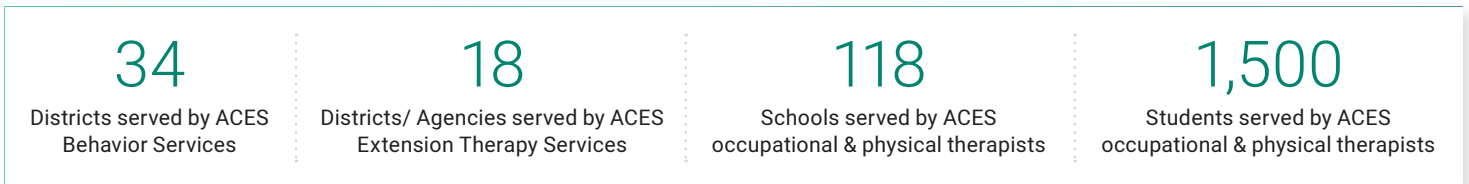
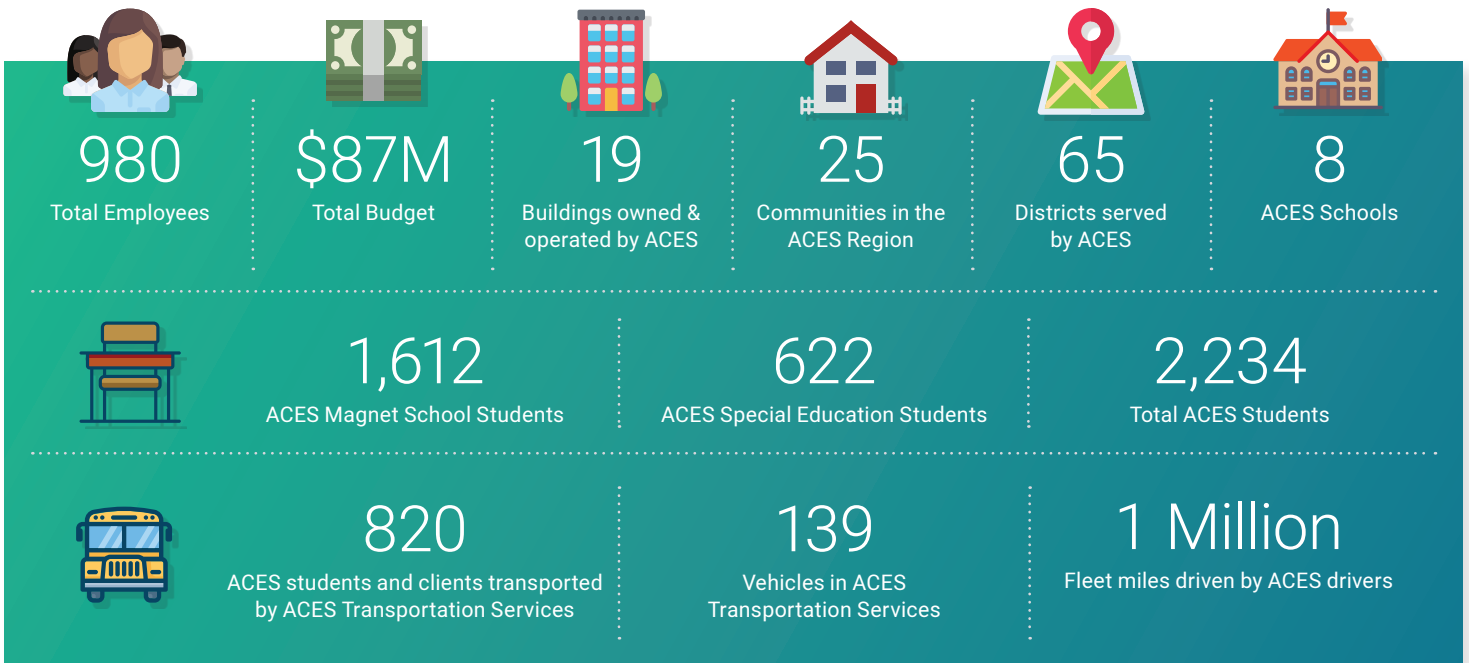
Member Districts

- ANSONIA
- BETHANY
- BRANFORD
- CHESHIRE
- DERBY
- EAST HAVEN
- HAMDEN
- MERIDEN
- MIDDLETOWN
- MILFORD
- NAUGATUCK
- NEW HAVEN
- NORTH BRANFORD
- NORTH HAVEN
- ORANGE
- OXFORD
- REGIONAL DISTRICT #5 (BETHANY, ORANGE, WOODBRIDGE)
- REGIONAL DISTRICT #13 (DURHAM, MIDDLEFIELD)
- REGIONAL DISTRICT #16 (BEACON FALLS, PROSPECT)
- SEYMOUR
- WALLINGFORD
- WATERBURY
- WEST HAVEN
- WOLCOTT
- WOODBIDGE

SCHOOL DISTRICT	MEMBER	OFFICE
Ansonia	Fran DiGiorgi	
Bethany	Inez Kelso	
Branford	Judith Holtz	
Cheshire	Cathy Hellreich	
Derby	Ken Marcucio	
East Haven	John Finkle	Executive Committee
Hamden	Lynn Campo	
Meriden	John D. Lineen, Jr.	Executive Committee
Middletown	Vincent Loffredo	
Milford	Earl Whiskeyman	
Naugatuck	Ethel Grant	
New Haven	Vacant	
North Branford	Sarah Querfeld	Vice Chairman
North Haven	Dorothy Logan	Executive Committee
Orange	Susan Riccio	Fiscal Officer
Oxford	Paula Guillet	
Regional District #5	Sue Cohen	
Regional District #13	Norman Hicks	Chairman
Regional District #16	Vacant	
Seymour	Vacant	
Wallingford	Karen Hlavac	
Waterbury	John Theriault	
West Haven	Patricia Libero	
Wolcott	Roberta Leonard	
Woodbridge	Vacant	

Executive Committee Members

OFFICE	MEMBER	SCHOOL DISTRICT
Chairman	Norman Hicks	Regional District #13
Vice Chairman	Sara Querfeld	North Branford
Fiscal Officer	Susan Riccio	Orange Public Schools
Executive Committee	John Finkle	East Haven
Executive Committee	John D. Lineen, Jr.	Meriden
Executive Committee	Dorothy Logan	North Haven



The Next Generation of ACES design plan is central to ACES creating and communicating a clear vision for the future. Key to the plan was the creation of a new platform structure that would oversee and support the work of the six bold steps.

ACES Platforms

ACES Platforms are overseen by the Executive Leadership Council. The Platforms consist of inputs – what ACES does to serve the internal needs of the agency, outputs – education, programs, services and products that ACES provides to external customers, and markets – represents ACES to external stakeholders and returns information about their needs.

Platform is borrowed from computer architecture and applied to organization structure. A platform is defined by a specific function and has a defined interaction and exchange with other platforms.

ACES Platforms are as follows:

Executive Leadership Council: Executive Leadership Council integrates the whole and establishes and maintains the vision and mission.

ACES Shared Services: ACES Shared Services provides internal support and operational services to the entire agency, including accounting, payroll and benefits administration, personnel management, technology, facilities and equipment and data and information management systems.

ACES Services: ACES Services develops and delivers programs and services for external clients and customers.

ACES Schools: ACES Schools develop and deliver programs and services to ACES students.

ACES Institute: ACES Institute builds agency capacity through program and talent development, grants and knowledge management.

ACES Marketing and Outreach: ACES Marketing and Outreach connects ACES to clients and other external entities.



ACES

Six Bold Steps

Bold Step 1

Establish a platform structure and platform leaders that will help us to be more agile in our work.

ACES established a platform structure and new leadership council, ACES Executive Leadership Council to direct and lead the newly established platforms. ACES Executive Leadership Council members are:

Dr. Thomas M. Danehy

Executive Director

Timothy Howes

Assistant Executive Director, Finance and Operations

William Rice

Assistant Executive Director, Schools and Curriculum

Carol Bunk

Director, Human Resources

Rachel Sexton

Chief, ACES Institute

Dr. Evelyn Rossetti-Ryan

Chief, Marketing & Outreach



Bold Step 2

Develop new lines of revenue-generating work.

ACES Insurance Collaborative

In 2016, ACES created a coalition for health insurance among ACES member districts and communities. The combined buying power of ACES towns, school boards and non-profit agencies helped to provide high-quality health insurance at competitive rates. Insurance Collaborative participants include the Town of North Haven, the North Haven Board of Education and the Ansonia Board of Education.

ACES Insurance Collaborative is in the spirit of what it means to be a regional educational service center - to be able to serve our districts and communities by providing high-quality services at competitive pricing. Our goal is to offer our member districts and municipalities the best programs at the best price.

- Dr. Thomas M. Danehy, ACES Executive Director



North Haven Insurance Collaborative participants

Bold Step 3

Develop streamlined, consistent referral, billing, and contract processes.

Bold Step 4

Develop a comprehensive system for employee development, recognition and agency voice.

Bold Step 5

Implement a transparent internal communication process.

The goals of Bold Step 3 are to be agile in allocating resources and providing services to clients, and to enhance and expand ACES core business of direct service to students. A key component of this step is to have clear, consistent work processes that support ACES internal operations and external interactions.

Bold Step 4's focus is on recognizing how critical staff members are to the organization's success, and to provide them the resources and support to do their jobs well. The work of Bold Step 4 involves continuously developing staff knowledge and skills to meet evolving changes and opportunities.

In 2016-2017, ACES created a committee to address Bold Step 5: To create a plan for improved transparent, internal communications. Steps taken in this area include the development of a new intranet site as well as a new external website. The Communications Committee is working in tandem with the Employee Recognition and Voice Committee, to initiate a series of ongoing open forums with staff.

Bold Step 6

Advocate on behalf of the region for magnet school funding.

This past year, ACES actively advocated for magnet school funding. ACES hosted three legislative breakfasts –one at each of its three magnet schools. Additionally, ACES magnet school parents and students wrote to their legislators and testified before the State Appropriations Committee in support of magnet school funding.



WIMS



TEMS



ECA

Voices Are Being Heard ...

“This program (ACES ECA) has been the most positive experience I've ever had in a school and I would hate for kids in the future to not have the opportunity I've had here, to not have a school where they feel validated and empowered by talents that are not usually praised or encouraged in a standard high school.”

- Student, ACES Educational Center for the Arts,
Written Testimony to the State Appropriations Committee

“Educating our youth is perhaps the most important investment a society can make towards their future. The State of Connecticut initiated that investment 12 years ago, when the Governor and our legislators committed to providing exciting and highly stimulating education by way of instituting solid educational choices in the form of magnet schools. However, this commitment to the state's future, and most importantly, to our children's future is once again in jeopardy.”

- Parent, ACES Thomas Edison Middle School, a STEM Magnet School,
Written Testimony to the State Appropriations Committee

“Magnet schools in general allow for families to choose schools that appeal most to their child's academic interests and talents. In this day and age of technology, and with the speed at which technology affects our everyday lives, I am proud that WIMS is and remains a technology leader by distributing to each student from grades K – 8th with their own iPad or Chromebook! These devices bridge the gap between education and the technological world in which we live today AND enhance our students overall learning.”

- Parent, ACES Wintergreen Interdistrict Magnet School,
Written Testimony to the State Appropriations Committee



WIMS



TEMS

ACES Schools

As a local education agency (LEA), ACES operates a number of schools and educational programs that serve the needs of member school districts across the region. The two primary district needs that we address in our schools are: a) issues of academic achievement stemming from racial, ethnic and economic isolation; and b) educating students whose disabilities pose challenges that exceed the capacity of local districts. In response, we provide rigorous academic curricula through three interdistrict magnet schools that enroll over to 1,600 students, and five special education schools that enroll over 600 students.



ECA

ACES Interdistrict Magnet Schools

ACES Educational Center for the Arts (ECA) is a half-day interdistrict magnet high school that prioritizes learning in the performing, literary and visual arts. Students receive direct instruction and mentoring from practicing, professional artists and arts educators. In 2016-2017, ECA students achieved 90 national, state, and regional awards in the arts, more than any other school in the state of Connecticut. Located in the heart of New Haven's Arts community, ECA nurtures individual creativity, innovation through risk-taking, and the value in harnessing failure in order to succeed. ECA's creative writers, actors, musicians, visual artists, and dancers are educated with real world experience and utilize their arts education to prepare them as innovative individuals for a world that requires creative and original thinkers.

ACES Thomas Edison Middle School (TEMS) is an interdistrict magnet school where 6th – 8th-grade students focus on science, technology, engineering, and mathematics. Thomas Edison Middle School's mission is to empower students to use technology effectively in order to become knowledgeable, capable, and ethical digital citizens. In 2015, TEMS incorporated Project Lead the Way (PLTW), an engineering program, to all students in grade 6 and 7. In 2016-17, 8th grade students built on their engineering skills through a PLTW program in Science, Flight and Space. TEMS is one of the few middle schools in Connecticut to offer Project Lead The Way to all of their students.

ACES Wintergreen Interdistrict Magnet School (WIMS) is a K-8 Magnet school serving over 600 students from more than a dozen Connecticut school districts. ACES Wintergreen Interdistrict Magnet School is dedicated to educating the whole child through inquiry, innovation, and the arts in a diverse, compassionate and mindful learning community. Wintergreen's rigorous curriculum is designed and implemented to prepare students for college and to launch them into adulthood with a deep understanding of our global interconnectedness.



Whitney HS North



Mill Road School

ACES Special Education Schools

ACES Center for Autism Spectrum & Developmental Disorders (CASDD) is an educational and clinical program serving students ages 11 – 21 with autism spectrum and developmental disorders. CASDD uses the Science-based Approaches to Independence and Life Skills (SAILS) program. Developed at ACES, the SAILS program is based in the science of applied behavior analysis. Staff facilitate student independence through the instruction of academic, community, executive, social, communication, and life skills.

ACES Mill Road School/ASPIRE Elementary is a public school that provides high-quality educational programming for children in grades K through 8 who have significant social, emotional and behavioral issues. Recognizing that many of the students are academically behind grade level, Mill Road School offers differentiated instruction in a small classroom setting. Each classroom has a teacher and teacher assistant which keeps the student to teacher ratio low. Therapeutic and behavioral supports are a critical design element of this program. The school also has specialized programming for students on the autism spectrum as well as for those with significant trauma and/or psychiatric needs.

ACES Whitney High School East/West & CREATE serves a diverse student population between the ages of 14 - 21. The educational program provides all of the necessary supports in order to enhance students' abilities to develop in the areas of academics, vocation/employment, life skills, communication and social skills. ACES CREATE (Continued Relevant Education and Transition Experiences) students are 18 - 21 years of age work to develop transitional, life skills and work skills that will assist students in their ability to be successful, independent working adults within their potential.

ACES Whitney High School North provides a positive, therapeutic, individualized and multifaceted program for high school students with significant behavioral, mental health and learning issues. Students participate in a full academic and vocational program which includes a motivational, behavioral management system. Instructional methods include frequent assessment of student progress and the expanded opportunity for students to receive remediation. In addition to academics and behavioral support, Whitney High School North features a Literature to Life program, trips to Washington, D.C., Boston and New York as well as the opportunity to take courses at Gateway Community College.

ACES Village School consists of three units: Early Childhood Program, Early Intensive Behavior Intervention (EIBI), and Elementary/Middle School programs. The Early Childhood Program includes an Integrated Preschool where opportunities for integration with typical peers are available for students. ACES Village School provides extensive services to children ages 3-14 with a wide range of abilities and complex needs. Related services include speech, physical and occupational therapies, social services, behavioral services, adaptive physical education, music therapy, and nursing services.



Whitney HS East/West



Integrated Preschool at Village School



CASDD

ACES Services

ACES Behavior Services and Autism Programs (BSAP) provides direct and support services for schools, organizations, and families in south-central Connecticut. The services involve behavioral assessment, support plan management and implementation, intensive instructional programming, and staff training/development. Behavior Analysts, ABA Trainers, Behavior Technicians, and Behavior Support Staff join with other team members within schools at ACES and beyond to provide effective educational solutions and opportunities. ACES Behavior Services and Autism Programs also provides regional professional development opportunities. In 2014, ACES Behavior Services and Autism Programs launched its Behavior Analysis in Education Series. The ACES Behavior Analysis in Education Series (BAES) involving low-cost, high-quality presentations from state, regional, and national experts will continue in 2017-2018. These services together with ACES' Home Outreach, complete a continuum of high quality, behavior analytic support to students, districts, and families.

ACES Facilities and Construction Services maintains the safety and security of ACES buildings and creates state-of-the-art learning facilities. In 2016-2017 ACES Facilities and Construction Services completed major building renovations of ACES schools. These renovations included two roof renovations, two solar array installations, and new energy efficient boilers. Additionally, a new playground was installed at ACES Early Childhood Services facility in Middletown.

ACES Early Childhood Services provides districts and their community partners professional learning opportunities that promote high-quality competency-based interdisciplinary programming for children birth to age 8. In addition to consultation, training and coaching to district leaders and early childhood practitioners, our department supports the design and implementation of aligned early childhood experiences Birth to Grade 3, across multiple systems. ACES Middlesex County Early Head Start Partnership is an example of ACES ECS inter-organizational system approach to providing direct services to children and families. The ACES Middlesex County Early Head Start Partnership, now in its sixth year of federal funding, serves 60 infants/toddlers in six communities.

ACES Extension Therapy Services provides contractual occupational therapy and physical therapy to member school districts, local private schools and agencies. Services are provided as a related service when deemed necessary for a special education student to participate in his and/or her educational curriculum and also to provide, as requested by the school district or school, support to the general education curriculum. In 2016-2017, ACES Extension Therapy Services provided services to approximately 1500 students, 118 schools and 18 districts/schools.



ACES Professional Development and School Improvement (PDSI) provides cost-effective, customized solution pathways to meet the needs of ACES collaborative partners by addressing professional learning at every phase. ACES PDSI works with regional partner districts, CSDE and other clients to anticipate and identify trends, target and access resources, design and implement initiatives and determine program effectiveness through comprehensive data analysis. In 2016-2017 ACES PDSI expanded access to its Alternate Route to Certification for Library Media Specialists, and Alternative Route to Certification for Teachers of English Language Learners through the addition of ACES-created blended and virtual learning curricula. In 2016-17, ACES PDSI received a grant from the National Endowment from the Humanities to support the study of civil rights. The grant will be a collaboration between ACES and the Gilder Lehrman Center for Center for the Study of Slavery, Resistance, and Abolition at Yale University.

ACES Technology Services supports highly technical infrastructures through network administration; data support; and desktop helpdesk services. Services are provided to ACES schools and programs and through contracted services with our member districts. Additionally, ACES Technology Services coordinates ACES Internal Technology Committee (AITC).

ACES Transportation Services provides door to door transportation for students and adults to and from ACES schools and programs as a contractual service to ACES sending districts and state agencies. In 2016-2017, ACES Transportation Services was responsible for the transportation of 820 special education students and adult consumers utilizing a fleet of 139 vehicles. The fleet includes 11 yellow school buses that serve students who require the use of a wheelchair.



ACES Regional Educational Programming

ACES International (AI) is an educational service division for learning communities seeking advancement in cultural competency, international connections, and real-world experiences. Established in 2014, AI creates global opportunities that help bring learning communities together. AI fosters the development of understanding and mutual respect within communities and between cultures by promoting the exchange of ideas and experiences. AI has facilitated collaboration between hundreds of students, educators and their schools, to promote sister school exchange, online classroom collaboration, service-learning projects, on-site professional learning, and intercultural education study tours.



ACES Signs Historic Agreement with China

In June, 2017, ACES signed an important agreement with the Chinese National Office for International Education. With the signing of the agreement, ACES Educational Center for the Arts has become the first American public high school to be partnered with the Chinese National Office for International Education. The signing of this agreement will enable ACES International to expand real-world learning abroad and on the ACES Educational Center for the Arts campus.

Derby RAISE (Raider Academy for Innovation Support and Education) was a partnership that ACES entered into with Derby Public Schools for the 2016-17 school year to support students who were not being successful in the traditional Derby Public School classrooms. Housed on the Derby High School site, Derby RAISE served students from Derby Middle School and High School. The programming consisted on a blended learning model which was a mix of the students utilizing a virtual learning system and traditional classroom instruction with content area teachers, and featured opportunities for students to learn culinary arts.

ACES Open Choice program started in 1998. It provides options for families to choose available openings in urban (New Haven) and suburban schools in the ACES region. In 2016-2017, 469 students, 57 schools and 14 school districts participated in ACES Open Choice Program.

ACES Magnet School Parent Choice is coordinated by ACES for districts in the ACES region. Families in any non-partner school district can apply to a lottery for open seats in ACES WIMS or TEMS. Families provide student transportation, with a travel subsidy provided by ACES.

ACES Interdistrict Cooperative Grant (IDCG) program is funded by the Connecticut State Department of Education's Interdistrict Cooperative Grant Program. Its goals are to increase student achievement and to reduce racial, ethnic and economic isolation. In 2016-17, ACES coordinated four programs that engaged 626 students in 19 districts.

ACES West Haven High School Collaborative provides educational services to nineteen students identified with Intellectual Disabilities at West Haven High School. Daily programming includes academic, vocational, and social skills instruction.

ACES School Program at Yale-New Haven Hospital fills a critical gap in the hospital's inpatient mental health services for school-age children. The program keeps students in the care of the hospital's Children's Psychiatric Emergency Services (CPES) on pace academically. It supports the transition of students in and out of the hospital by serving as a liaison between the family, school, and the hospital. Daily group and individualized instruction are delivered by a certified special education teacher.

ACES ACCESS provides vocational, and day support option services to adults, 21 years & older, in the greater New Haven County. The mission of the ACCESS program is to empower consumers to be contributing members of their community. The vocational wing of the program provides services at 51 community-based sites. Additionally, ACES ACCESS runs a lawn care business, United Lawn Care and a centerpiece business, Designs by ACCESS. The DSO program provides individuals who are no longer interested in paid work with recreational and volunteer opportunities in their community.

Minority Teacher Recruitment - 5th Annual Future Educators' Symposium

On Friday, May 12, 2017, the ACES Minority Teacher Recruiting (MTR) Advisory Council, in conjunction with the Regional Educational Service Center MTR Alliance (RESC MTR Alliance) and the Southern Connecticut State University School of Education hosted the 5th Annual Future Educators Symposium on the campus of Southern Connecticut State University. 130 male high school students of color from ACES, Hamden, Meriden, Middletown, New Britain, New Haven and Waterbury Public Schools participated in the Symposium. The Symposium featured two panel discussions and a focus group that were designed to introduce students to the education profession. Erik Clemmons, ConnCAT President and CEO was the keynote speaker. Panelists included William Rice, ACES Assistant Executive Director for Schools and Curriculum, Manny Zaldivar, a first grade ELD Teacher at Smalley Academy in New Britain, Carey Edwards, Middle School Principal Waterbury Arts Magnet School, Hector Cardona 8th Grade U.S. History Teacher at Washington Middle School in Meriden and Ada DeYoung a Spanish teacher at Hillhouse High School in New Haven.



MTR FES Keynote Speaker, Erik Clemmons



MTR FES Participants



Whitney HS North Students & Staff

ACES 2016–2017 Teacher of the Year & Executive Director Recognition Award Recipients



Darylle Olsen ACES Teacher of the Year



EDRA Recipient Laura Boileau, ACES Whitney High School East - West & CREATE



EDRA Recipient Victoria Gordon, ACES Mill Road School



EDRA Recipient Peter Loffredo with Jason Hiruo, Principal, ACES Educational Center for the Arts



Leslie Peters, Principal with EDRA Recipient Da'Vina Miller, ACES Center for Autism Spectrum and Developmental Disorders



Virginia Tagliatela, Principal with EDRA Recipient Marci Rizzo, ACES Village School and ACES Governing Board Chair Norman Hicks

ACES Central Administration

ACES Central Administration is dedicated to providing the technology, administration, fiscal and related services necessary to carry out ACES mission and goals.

Executive Director serves as the Chief Executive Officer of ACES as a regional service agency and as the Superintendent of ACES schools.

Assistant Executive Director for Schools and Curriculum oversees the development, delivery, and assessment of teaching and learning within ACES schools and educational programs.

Assistant Executive Director for Finance and Operations oversees the agency's Fiscal Services, ACES Services, Technology Services, PDSI, all outsourced food services, and serves as a risk manager for the agency's insurances.

Human Resources manages recruitment and hiring, employee recognition, benefits administration, labor relations, fingerprinting services, and minority teacher recruiting for ACES school districts. The department also works to orient staff to the agency and is involved in creating professional growth opportunities for all employees.

ACES Institute is responsible for program development, including grants, ventures and collaborations; talent development, including, the ACES Leadership Academies, the Professional Development and Evaluation Committee, and employee growth and evaluation in partnership with ACES Human Resources division; and knowledge management. Its mission is to develop ACES's capacity to best serve its students, districts, and other clients by maximizing the agency's resources.

Marketing and Outreach oversees all communications and public relations, Translation Services, community outreach and engagement, the ACES Business Advisory Council, ACES Open Choice and ACES ACCESS. Additionally, the Marketing and Outreach division oversees and coordinates the ACES Education Foundation. The Marketing and Outreach division's mission is to increase awareness of and engagement with ACES, and to advocate for ACES schools and programs.

ACES Facilities and Construction Services maintains the safety and security of ACES buildings and creates state-of-the-art learning facilities.

Fiscal Services processes all purchase orders and invoices for ACES \$87 million budget and biweekly payroll for 980 employees.

Pupil-Related Services provide ACES internal schools with specialized services such as social work, developmental guidance, psychology services, speech, physical and occupational therapies, nursing and psychiatric counseling services.

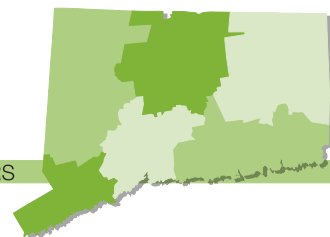
Assistive Technology Services address the needs of local school districts through a team-oriented decision-making process in the assessment, selection, acquisition and use of assistive device(s).



RESC Directors with Lieutenant Governor Nancy Wyman

of RESC Alliance

CONNECTICUT ALLIANCE OF REGIONAL SERVICE CENTERS



The Connecticut RESC Alliance

The Connecticut RESC Alliance ACES is one of six regional educational service centers (RESCs) in Connecticut. All RESCs support Connecticut school districts' instructional and operational components. The RESC Alliance works collaboratively to develop and deliver high-quality, cost-effective collaborative programs and initiatives. For additional information on the RESC Alliance, go to www.rescalliance.org.



	Ansonia	Bethany	Branford	Cheshire	Derby	East Haven	Hamden	Meriden	Middletown	Milford	Naugatuck	New Haven	North Branford	North Haven	Orange	Oxford	Seymour	Wallingford	Waterbury	West Haven	Wolcott	Woodbridge	Reg Dist #5	Reg Dist #13	Reg Dist #16	ACES Programs	Other
SPECIAL EDUCATION SCHOOLS																											
CASDD / SAILS	x				x	x	x		x			x	x			x	x				x						9
Mill Road School	x	x	x		x	x	x	x	x	x	x	x		x			x	x	x	x							
Village School	x		x		x	x	x	x	x	x	x	x	x	x	x			x	x	x	x		x				36
Whitney East/West/CREATE	x		x	x	x	x	x	x			x	x	x	x			x	x	x	x			x		x		
Whitney North	x	x	x	x	x	x	x	x	x	x	x	x	x	x	x	x	x	x	x	x	x	x	x	x	x		29
MAGNET SCHOOLS																											
ECA	x	x	x	x		x	x	x	x	x		x	x	x	x	x	x	x		x	x	x	x	x	x	x	6
TEMS								x	x									x	x					x			3
WIMS			x		x	x	x	x		x		x		x				x		x							5
SERVICES																											
ACCESS			x			x	x	x		x		x		x	x			x		x							1
Behavior Services			x									x	x	x						x		x				x	
Early Childhood	x		x		x	x	x	x	x		x	x		x				x		x							6
Extension Therapy																											
YNNH, Hospital of St. Raphael	x		x	x	x	x	x	x	x	x	x	x	x	x		x	x	x	x	x	x		x	x	x	x	65
In-District Collaboratives					x															x							
Magnet School Parent Choice			x		x	x				x				x					x	x							3
Minority Teacher Recruitment						x	x	x	x			x							x	x							
Open Choice	x	x	x	x		x	x			x		x	x	x	x			x				x	x				9
PDSI	x	x	x	x	x	x	x	x	x	x	x	x	x	x	x	x	x	x	x	x	x	x	x	x	x	x	66
Pupil-Related Services	x		x	x	x	x	x	x	x	x	x	x	x	x		x	x	x	x	x	x		x	x	x	x	65
Assistive Technology	x	x	x		x	x	x					x	x	x			x		x	x	x		x	x			5
Technology Services	x	x	x		x	x	x					x	x	x			x		x	x	x		x	x			5
Transportation	x	x	x	x	x	x	x				x		x		x		x			x		x		x	x		

Major Interagency Relationships and Sources of Funding

ACES maintains strong relationships with the school districts that created and govern the organization. This connection with member districts, plus other local funds, accounts for approximately 75% of ACES financial support. Programs ranging from education for students with cognitive, emotional, and physical challenges to training programs for staff from the school districts are financially supported by member districts through tuition and fees for services.

The second major source of support is the Connecticut State Department of Education (CSDE). ACES receives grants and contracts primarily for state initiatives, such as the magnet school initiative, Interdistrict Cooperative Grant Program, the Open Choice program, professional development activities, school construction, and school readiness programs. These programs have an impact on both school districts and local communities. This support accounts for approximately 19.2 % of ACES income.

The third major ACES interagency relationship involves the Connecticut Department of Developmental Services (DDS). ACES principal involvement with this agency is through programs for disabled adults. This funding represents approximately 2.9% of ACES budget.

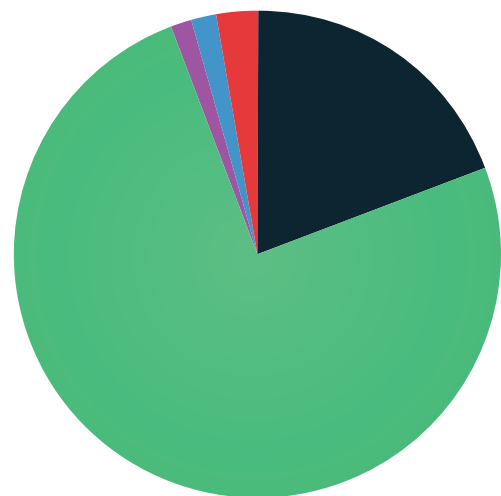
The fourth major source of support for ACES programs is federal funding through grants for educational programming. This source accounts for 1.6% of the total budget.

The final category of major revenue is from private sources in the form of grants from charitable foundations and other special contracts. These grants and “other” contracts represent approximately 1.3% of the ACES annual budget.

ACES is a member of the Connecticut Alliance of Regional Educational Service Centers and works closely with the other RESC’s on collaborative projects.

ACES Funding Sources

- Local Education Agencies **75.00%**
- State Department of Education Grants **19.20%**
- CT Department of Developmental Services **2.90%**
- Federal Education Grants **1.60%**
- Foundations/Private Donations/Other **1.30%**



PROGRAM/DESCRIPTION	SOURCE	BUDGET	EXPENSE
INSTRUCTIONAL PROGRAMS			
SPECIAL EDUCATION			
1003 Mill Rd	L	\$ 7,316,574	\$ 7,361,550
1007 SAILS-Intensive	L	4,587,421	4,331,412
1060 Summer School	L	2,254,695	2,230,158
1040 Transportation	L	2,615,136	2,583,534
1005 Village EIBI	L	4,262,111	4,038,081
1004 Village School	L	6,376,267	6,219,269
1013 West Haven High Program	L	669,016	561,577
1001 Whitney High School East & West	L	8,411,261	8,070,898
1011 Whitney High School North	L	4,856,979	4,775,631
			\$ 40,172,110
MAGNET SCHOOLS			
1203 Educational Center for the Arts	S,L	\$ 3,031,697	\$ 2,903,007
2405 Magnet Transportation	S	320,456	289,772
1412 Project Lead The Way	L	40,511	18,796
1210 Thomas Edison Middle School	S,L	10,289,568	10,348,364
2230 Title I Improving Basic Programs 6/18	F	361,404	312,150
2238 Title I Improving Basic Programs 6/17	F	66,736	66,736
2637 Title II A Teachers 6/18	F	53,751	30,000
2239 Title II A Teachers 6/17	F	54,728	54,728
1205 Wintergreen Magnet School	S,L	8,086,678	7,980,577
			\$ 22,004,129
REGULAR EDUCATION			
1227 New Haven FY16 to FY17 Carryover	O	\$ 420,828	\$ 420,828
1219 New Haven Magnet Schools	L	441,000	440,879
1206 NH Betsy Ross Arts Magnet School	L	699,701	583,562
1204 NH Cooperative High School	L	457,670	363,739
1224 RAISE Program - Derby	L	260,000	260,000
1214 St. Raphael's Instructional	L	146,319	127,112
1218 Urban Youth	L	1,179,750	1,280,936
			\$ 3,477,056
INTERDISTRICT PROGRAMS			
2641 IRISS	S	\$ 111,171	\$ 111,171
2640 LUCID	S	104,365	104,365
1671 Personalized Learning	L,O	50,000	42,466
2218 STEM Explorations	S	44,561	44,561
2212 World & English Language Learners	S	36,007	36,007
			\$ 338,569
TOTAL INSTRUCTIONAL PROGRAMS			\$ 65,991,864
PUPIL PERSONNEL & SUPPORT SERVICES			
1105 Assistive Technology	L	\$ 488,070	\$ 318,183
1103 Behavioral Services	L	3,329,470	2,800,405
2236 Bilingual Education	S	4,036	4,036
1102 Extension Therapy Services	L	3,958,795	3,317,458
1101 Pupil Services	L	793,191	697,891
1613 Student Career & Curriculum Services	L	474,571	316,191
TOTAL PUPIL PERSONNEL & SUPPORT SERVICES			\$ 7,454,163
EARLY CHILDHOOD/EARLY HEAD START			
1801 Early Childhood Services	S,L,O	\$ 329,541	\$ 306,163
2811 Early Head Start 1/16-12/16	F	560,115	560,115
2812 Early Head Start 1/17-12/17	F	877,483	224,512
2857 Head Start Collaboration Project	F	7,000	6,444
1804 Meriden QE	L	35,000	35,000
1806 New Haven QE II	L	10,200	4,230
2814 OPM Facility Improvement Grant	S	610,743	17,039
2818 Playground - Middletown	L	50,000	870
2856 Pre-School Development Grant	O	31,900	8,602
1809 West Haven QE	L	12,068	5,877
TOTAL EARLY CHILDHOOD/EARLY HEAD START			\$ 1,168,851

PROGRAM/DESCRIPTION	SOURCE	BUDGET	EXPENSE
PROFESSIONAL DEVELOPMENT PROGRAMS			
1603 ACES Curriculum	L	\$ 704,182	\$ 807,598
1616 ACES Internal Professional Development	L	1,399,518	266,960
1617 ACES International	O	50,000	50,070
1624 Adv. Alt. Prog.-Library Media Spec.	L	304,038	169,990
2652 ARCTELL	L	298,969	158,353
1625 ARCTELL - Hartford	L	106,175	91,228
1627 ARCTELL - New Haven	L	96,200	96,140
1628 ARCTELL - Windham	L	78,000	67,429
2662 ARCTELL/Statewide ELL	S	16,843	16,843
1604 Conference Management	S,L,O	66,975	52,473
1623 eARCLMS	L	144,000	121,585
2633 EPPF-Title II Part A Teachers	S,L	33,510	29,591
1649 New Haven Action Research	L	50,000	50,000
1641 New Haven Supp. SIG Funds	S	894	894
1644 New Haven TEAM Support	L	492,880	225,374
1652 PDSI Conference Services	L	59,976	50,538
1658 PDSI District Agent	L	650	-
1602 Professional Development/School Improvement	S,L,O	2,441,430	2,160,926
1643 Review of New Haven Beginning Tchr	S	13,447	5,293
2653 State-Wide Pilot-Educator Evaluations	S	48,184	26,265
1636 Title II Tech	F	2,682	365
2649 Title III A English Acq. 6/16	F	66,694	58,795
2651 Title III A English Acq. 6/17	F	8,368	8,368
2682 Title III ELL	F	16,559	16,559
1656 Virtual High School	L	29,250	29,250
TOTAL PROFESSIONAL DEVELOPMENT PROGRAMS			\$ 4,560,886

RESC ENTITLEMENTS			
2401 Administering Open Choice	S	\$ 181,005	\$ 181,005
2404 Choice Transportation	S	2,326,964	2,317,530
TOTAL RESC ENTITLEMENTS			\$ 2,498,535

CAREER SERVICES			
1504 ACCESS-Supported Employment	S,O	\$ 2,760,375	\$ 2,484,887
1550 Vocational Support Services	L,O	135,400	154,689
TOTAL CAREER SERVICES			\$ 2,639,577

GRAND TOTAL 2016-2017: BUDGET: \$91,111,712 EXPENSE: \$84,313,876

Budgets Included in Above:

Central Office (1370, 1401-1410, 1415)	\$ 8,838,378
Building Operations (1301-1360)	\$ 8,506,452
Magnet School Operating Grants	\$ 11,983,058
Misc Grants (Funding not guaranteed on an annual basis)	\$ 383,283

Legend of Funding Sources: **L:** Local **F:** Federal **S:** State **O:** Other

PROGRAM/DESCRIPTION	SOURCE	BUDGET
INSTRUCTIONAL PROGRAMS		
SPECIAL EDUCATION		
2263 Key Bank Grant - Village	O	\$ 10,000
1003 Mill Rd	L	7,499,923
1007 SAILS-Intensive	L	4,860,119
1060 Summer School	L	2,277,740
1040 Transportation	L	2,710,719
1005 Village EIBI	L	4,138,695
1004 Village School	L	5,790,894
1013 West Haven High Program	L	675,579
1001 Whitney High School East & West	L	8,469,774
1011 Whitney High School North	L	4,971,976
2264 Workers' Comp Trust Grant	O	10,550
		\$ 41,415,969
MAGNET SCHOOLS		
1203 Educational Center for the Arts	S,L	2,913,782
2405 Magnet Transportation	S	300,000 *
1412 Project Lead the Way	L	23,536
1210 Thomas Edison Middle School	S,L	10,168,496
2230 Title I Improving Basic Programs 6/18	F	49,254 *
2238 Title I Improving Basic Programs 6/19	F	360,000 *
2637 Title II A Teachers 6/18	F	23,571 *
2239 Title II A Teachers 6/19	F	53,000 *
1205 Wintergreen Magnet School	S,L	7,297,489
		\$ 21,189,128
REGULAR EDUCATION		
1209 New Haven - ASPIRE	L	\$ 1,479,075
1227 New Haven FY 17 Carryover	O	96,736 *
1219 New Haven Magnet Schools	L	400,000 *
1206 NH Betsy Ross Arts Magnet School	L	414,252 *
1204 NH Cooperative High School	L	316,801 *
1218 Urban Youth	L	1,293,741 *
		\$ 4,000,605
INTERDISTRICT PROGRAMS		
1671 Personalized Learning	L	\$ 50,000
		\$ 50,000
TOTAL INSTRUCTIONAL PROGRAMS		\$ 66,655,702
PUPIL PERSONNEL & SUPPORT SERVICES		
1105 Assistive Technology	L	\$ 402,701
1103 Behavioral Services	L	2,967,868
2236 Bilingual Education	S	2,944 *
1102 Extension Therapy Services	L	3,729,872
1101 Pupil Services	L	747,334
1613 Student Career & Curriculum Services	L	215,727
TOTAL PUPIL PERSONNEL & SUPPORT SERVICES		\$ 8,066,446
EARLY HEAD START		
2812 Early Head Start 1/17-12/17	F	\$ 652,971
2810 Early Head Start 1/18-12/18	F	877,483 *
TOTAL EARLY HEAD START		\$ 1,530,454

PROGRAM/DESCRIPTION	SOURCE	BUDGET
PROFESSIONAL DEVELOPMENT PROGRAMS		
1603 ACES Curriculum	L	\$ 713,813
1616 ACES Internal Professional Development	L	631,146
1617 ACES International	O	50,000
1624 ACRLMS - Library Media	L, O	78,923
2652 ARCTELL	S, L, O	139,982 *
1625 ARCTELL - Hartford	L	206,672
1627 ARCTELL - New Haven	L	95,975
2662 ARCTELL/Statewide ELL	S	84,550
1604 Conference Management	S,L,O	83,708
1623 eACRLMS - Online Library Media	L, O	301,415
2633 EPPF-Title II Part A Teachers	L	29,419 *
2688 National Endowment for the Humanities	F	154,991
1644 New Haven TEAM Support	L	397,394
1642 NHPS Transition Services	L	9,600
1652 PDSI Conference Services	S,L,O	84,678
1658 PDSI District Agent	L	650
2856 Pre-School Development Grant		35,700
1602 Professional Development/School Improvement	S,L,O	1,895,761
1643 Review of NH Beginning Teachers	L	8,154
2653 State-Wide Pilot-Educator Evaluations	S	14,740
1636 Title II Tech	F	2,318
2651 Title III A English Acq. 6/17	F	66,694 *
2649 Title III A English Acq. 6/18	F	7,899
1656 Virtual High School	L	29,250 *
1639 Waterbury Tech PD	L	1,892
TOTAL PROFESSIONAL DEVELOPMENT PROGRAMS		\$ 5,125,324
RESC ENTITLEMENTS		
2401 Administering Open Choice	S	\$ 171,000 *
2404 Choice Transportation	S	2,200,000 *
TOTAL RESC ENTITLEMENTS		\$ 2,371,000
CAREER SERVICES		
1504 ACCESS - Supported Employment	S,O	\$ 2,046,707
1550 Vocational Support Services	L,O	154,689
TOTAL CAREER SERVICES		\$ 2,201,396

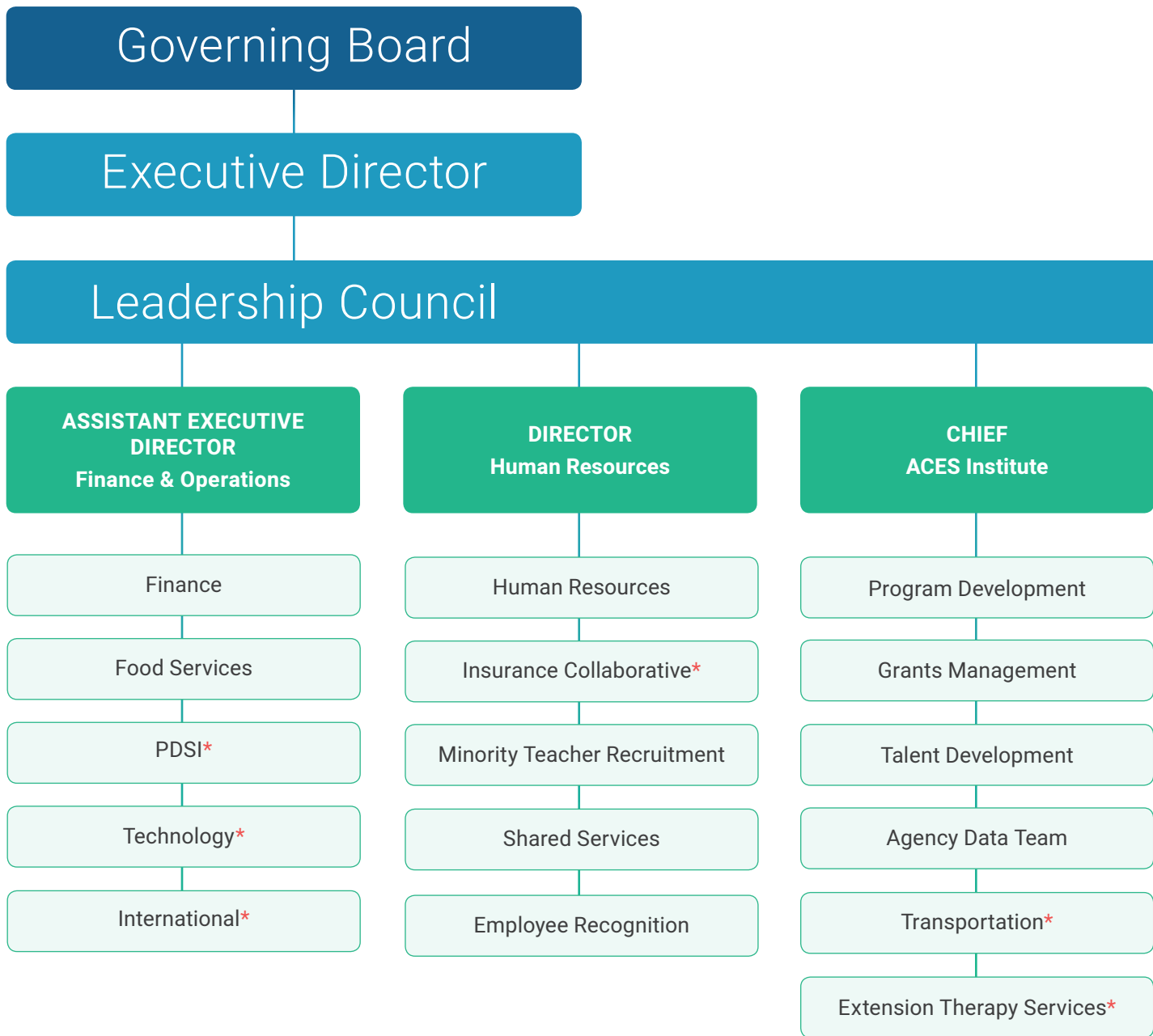
GRAND TOTAL 2017-2018 BUDGETS: \$85,950,321

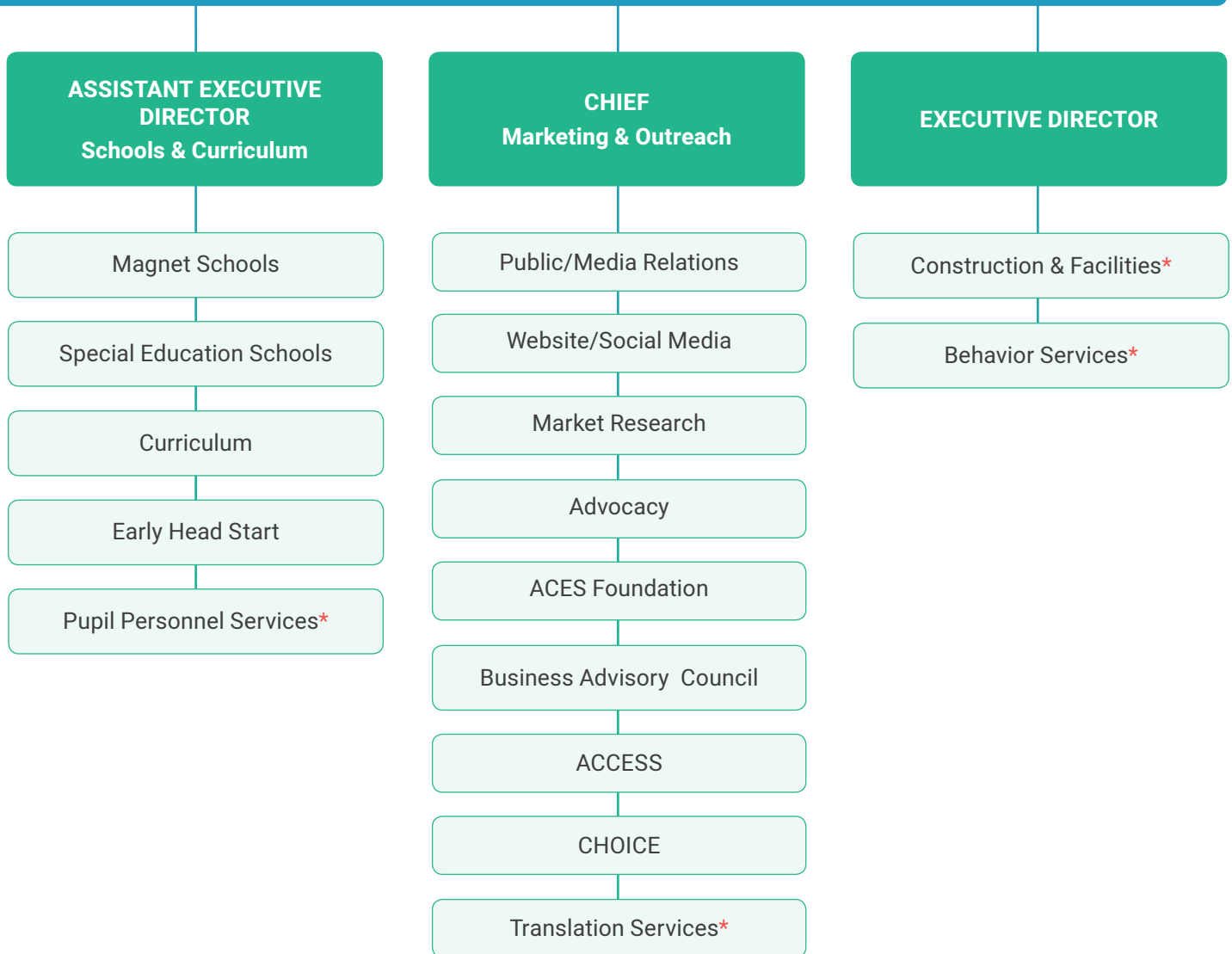
Budgets Included in Above:

Central Office (1370, 1401-1410, 1415)	\$ 8,768,507
Building Operations (1301-1360)	\$ 8,882,238
Magnet School Operating Grants	\$ 11,983,058 *
Misc Grants (Funding not guaranteed on an annual basis)	\$ 87,500 *

* Estimated Grants Budgets

Legend of Funding Sources: L: Local F: Federal S: State O: Other





* Indicates Service coordinated by AED for Finances and Operations

Central Administration

Peter C. Young

Administration Building
350 State Street
North Haven, CT 06473
(203) 498-6800
Directions: (203) 498-6885

Executive Director

Thomas M. Danehy, Ed.D.
(203) 498-6817

Assistant Executive Director

Finance and Operations
Timothy Howes
(203) 498-6838

Assistant Executive Director
Schools and Curriculum

William Rice
(203) 498-6868

Director, Human Resources

Carol Bunk
(203) 498-6823

Chief, ACES Institute

Rachel Sexton
(203) 407-4437

Chief, Marketing & Outreach

Evelyn Rossetti-Ryan, Ed.D.
(203) 498-6881

Facilities

Timothy Gunn
(203) 498-6839

Schools

ASPIRE

560 Ella T. Grasso Boulevard
New Haven, CT 06519
Bryan Markiewicz, Principal
(475) 220-6750

ACES Center for Autism Spectrum and Developmental Disorders

26 Old Post Road
Northford, CT 06472
Leslie Peters, Principal
(203) 484-9501

ACES Educational Center for the Arts

55 Audubon Street
New Haven, CT 06510
Jason Hiruo, Principal
(203) 777-5451

ACES Mill Road School

295 Mill Road
North Haven, CT 06473
Cynthia Ratchelous, Principal
Kerri Gilmore, Assistant Principal
(203) 234-0303

ACES Thomas Edison Middle School

1355 No. Broad Street
Meriden, CT 06450
Karen Habegger, Principal
Megan Conaster, Assistant Principal
(203) 639-8403

ACES Village School

31 Temple Street
North Haven, CT 06473
Virginia Tagliatela, Principal
Jennifer Santarcangelo, Assistant Principal
(203) 234-7611

ACES Whitney High School East / West / CREATE

205 Skiff Street / 261 Skiff Street
Hamden, CT 06517
Lisa Mucciacciaro, Principal
Patricia Hart, Assistant Principal
(203) 281-3577

ACES Whitney High School North

205 Skiff Street
Hamden, CT 06517
Mark Dougherty, Principal
(203) 407-4500

ACES Wintergreen Interdistrict Magnet School

670 Wintergreen Avenue
Hamden, CT 06514
Todd A. Solli, Principal
Vicki Rose, Assistant Principal
(203) 281-9668

Services

ACCESS

60 United Drive
North Haven, CT 06473
Chidi Onukwughu
(203) 234-1344

Behavior Services and Autism Programs

26 Old Post Road
Northford, CT 06472
James A. Hoko, Ph.D., BCBA-D
(203) 484-9501

Construction Services

350 State Street
North Haven, CT 06473
Timothy Gunn
(203) 498-6839

Early Childhood Services

205 Skiff Street
Hamden, CT 06517
Leslie Abbatiello
(203) 407-4402

Extension Therapy Services

205 Skiff Street
Hamden, CT 06517
Laura Evangelist
(203) 407-4470

Insurance Collaborative

350 State Street
North Haven, CT 06473
Timothy Howes
(203) 498-6838

International Programs and Services

350 State Street
North Haven, CT 06473
Jason Hiruo
(203) 498-6832

Professional Development and School Improvement Services

205 Skiff Street
Hamden, CT 06517
Leslie Abbatiello
(203) 407-4402

Pupil Services and Collaborative Programs

204 State Street
North Haven, CT 06473
Vanessa Taragowski
(203) 498-6849

Technology Services

204 State Street
North Haven, CT 06473
Wanda Wagner, D.M.
(203) 287-6840

Translation Services

350 State Street
North Haven, CT 06473
Evelyn Rossetti-Ryan, Ed.D.
(203) 498-6881

Transportation Services

60 United Drive
North Haven, CT 06473
Dawn Carranzo
(203) 234-2406

aces **Innovators
in Education**

350 STATE STREET • NORTH HAVEN, CT 06473

(203) 498-6800 / WWW.ACES.ORG

